

Datasheet for ABIN5579255

anti-GPR89A antibody[Go to Product page](#)**1** Image

Overview

Quantity:	50 µg
Target:	GPR89A
Reactivity:	Human, Mouse, Rat, Cow, Horse, Hamster, Monkey, Pig
Host:	Rabbit
Clonality:	Polyclonal
Conjugate:	This GPR89A antibody is un-conjugated
Application:	Immunohistochemistry (Paraffin-embedded Sections) (IHC (p))

Product Details

Purpose:	Rabbit polyclonal antibody raised against synthetic peptide of GPR89A.
Immunogen:	A synthetic peptide (conjugated with KLH) corresponding to human GPR89A.
Specificity:	Cytoplasmic loop. Predicted crossreactivity with mouse due to sequence similarity .
Cross-Reactivity:	Cow, Hamster, Horse, Human, Monkey, Mouse, Pig, Rat

Target Details

Target:	GPR89A
Alternative Name:	GPR89A (GPR89A Products)
Background:	Full Gene Name: G protein-coupled receptor 89A Synonyms: FLJ10492,FLJ11696,FLJ36909,MGC688,MGC87324,UNQ192
Gene ID:	653519

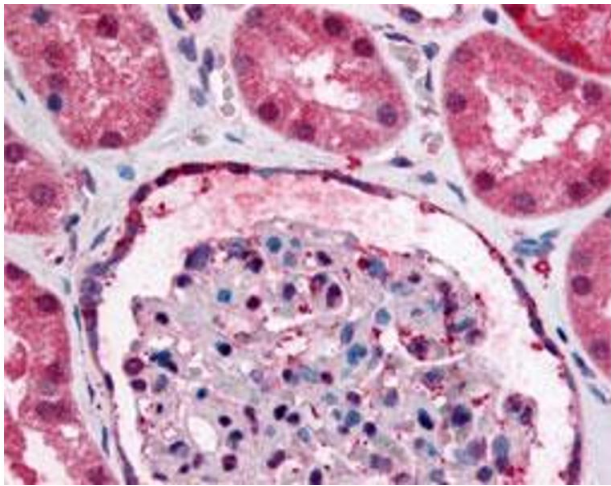
Application Details

Application Notes:	Immunohistochemistry (Formalin/PFA-fixed paraffin-embedded sections) (5 µg/mL) The optimal working dilution should be determined by the end user.
Restrictions:	For Research Use only

Handling

Format:	Liquid
Buffer:	In PBS (0.09 % sodium azide)
Preservative:	Sodium azide
Precaution of Use:	This product contains Sodium azide: a POISONOUS AND HAZARDOUS SUBSTANCE which should be handled by trained staff only.
Storage:	4 °C,-80 °C
Storage Comment:	Store at 4°C. For long term storage store at -80°C. Aliquot to avoid repeated freezing and thawing.

Images



Immunohistochemistry

Image 1. Immunohistochemical (Formalin/PFA-fixed paraffin-embedded sections) staining of human kidney with GPR89A polyclonal antibody .