

Datasheet for ABIN5579263

**anti-GPRC5A antibody (Extracellular Domain)****2** Images[Go to Product page](#)

## Overview

Quantity:	50 µg
Target:	GPRC5A
Binding Specificity:	Extracellular Domain
Reactivity:	Human
Host:	Rabbit
Clonality:	Polyclonal
Conjugate:	This GPRC5A antibody is un-conjugated
Application:	Immunohistochemistry (Paraffin-embedded Sections) (IHC (p)), Immunocytochemistry (ICC)

## Product Details

Purpose:	Rabbit polyclonal antibody raised against synthetic peptide of GPRC5A.
Immunogen:	A synthetic peptide corresponding to 16 amino acids at N-terminal extracellular domain of human GPRC5A.
Specificity:	BLAST analysis of the peptide immunogen showed no homology with other human proteins.
Cross-Reactivity:	Human
Cross-Reactivity (Details):	BLAST analysis of the peptide immunogen showed no homology with other human proteins.

## Target Details

Target:	GPRC5A
Alternative Name:	GPRC5A ( <a href="#">GPRC5A Products</a> )

## Target Details

Background:	Full Gene Name: G protein-coupled receptor, family C, group 5, member A Synonyms: GPCR5A,RAI3,RAIG1
Gene ID:	9052

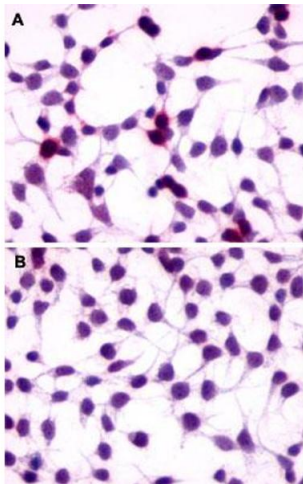
## Application Details

Application Notes:	Immunohistochemistry (Formalin/PFA-fixed paraffin-embedded sections) (8-38 µg/mL) The optimal working dilution should be determined by the end user.
Restrictions:	For Research Use only

## Handling

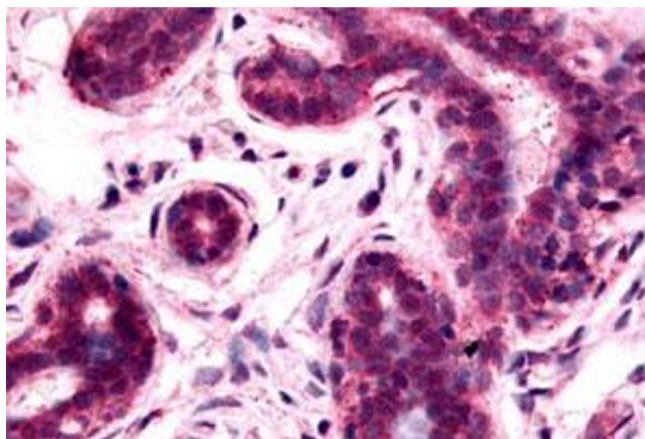
Format:	Liquid
Buffer:	In PBS (0.09 % sodium azide)
Preservative:	Sodium azide
Precaution of Use:	This product contains Sodium azide: a POISONOUS AND HAZARDOUS SUBSTANCE which should be handled by trained staff only.
Storage:	4 °C,-80 °C
Storage Comment:	Store at 4°C. For long term storage store at -80°C. Aliquot to avoid repeated freezing and thawing.

## Images



### Immunocytochemistry

**Image 1.** Immunocytochemistry (ICC) staining of HEK293 human embryonic kidney cells transfected (A) or untransfected (B) with GPCR5A. Using GPCR5A polyclonal antibody .



### Immunohistochemistry

**Image 2.** Immunohistochemical (Formalin/PFA-fixed paraffin-embedded sections) staining in human breast with GPRC5A polyclonal antibody . Immunohistochemistry of formalin-fixed, paraffin-embedded tissue after heat-induced antigen retrieval.