

Datasheet for ABIN5579272

**anti-GPRC5C antibody**[Go to Product page](#)**1** Image

## Overview

Quantity:	50 µg
Target:	GPRC5C
Reactivity:	Human, Mouse, Monkey, Dog, Horse, Cow, Gorilla, Orang-Utan
Host:	Rabbit
Clonality:	Polyclonal
Conjugate:	This GPRC5C antibody is un-conjugated
Application:	Immunohistochemistry (Paraffin-embedded Sections) (IHC (p))

## Product Details

Purpose:	Rabbit polyclonal antibody raised against synthetic peptide of GPRC5C.
Immunogen:	A synthetic peptide (conjugated with KLH) corresponding to human GPRC5C.
Specificity:	C-terminal Cytoplasmic domain of human.
Cross-Reactivity:	Cow, Dog, Gorilla, Horse, Human, Monkey, Mouse, Orang-Utan

## Target Details

Target:	GPRC5C
Alternative Name:	GPRC5C ( <a href="#">GPRC5C Products</a> )
Background:	Full Gene Name: G protein-coupled receptor, family C, group 5, member C Synonyms: MGC131820,RAIG-3,RAIG3
Gene ID:	55890

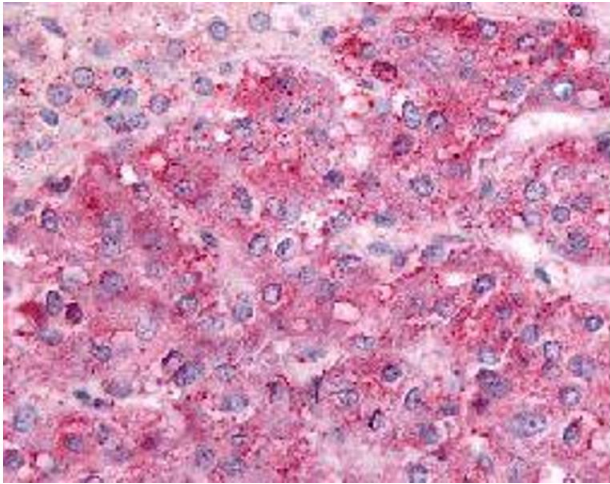
## Application Details

Application Notes:	Immunohistochemistry (Formalin/PFA-fixed paraffin-embedded sections) (10 µg/mL) The optimal working dilution should be determined by the end user.
Restrictions:	For Research Use only

## Handling

Format:	Liquid
Buffer:	In PBS (0.09 % sodium azide)
Preservative:	Sodium azide
Precaution of Use:	This product contains Sodium azide: a POISONOUS AND HAZARDOUS SUBSTANCE which should be handled by trained staff only.
Storage:	4 °C,-80 °C
Storage Comment:	Store at 4°C. For long term storage store at -80°C. Aliquot to avoid repeated freezing and thawing.

## Images



### Immunohistochemistry

**Image 1.** Immunohistochemical (Formalin/PFA-fixed paraffin-embedded sections) staining in human adrenal gland with GPRC5C polyclonal antibody .