

Datasheet for ABIN5579273

anti-GPRC5D antibody (1st Cytoplasmic Domain)[Go to Product page](#)**1** Image

Overview

Quantity:	50 µg
Target:	GPRC5D
Binding Specificity:	1st Cytoplasmic Domain
Reactivity:	Human, Monkey, Gorilla
Host:	Rabbit
Clonality:	Polyclonal
Conjugate:	This GPRC5D antibody is un-conjugated
Application:	Immunohistochemistry (Paraffin-embedded Sections) (IHC (p))

Product Details

Purpose:	Rabbit polyclonal antibody raised against synthetic peptide of GPRC5D.
Immunogen:	A synthetic peptide corresponding to 18 amino acids from 1st cytoplasmic domain of human GPRC5D.
Specificity:	BLAST analysis of the peptide immunogen showed no homology with other human proteins.
Cross-Reactivity:	Gorilla, Human, Monkey
Cross-Reactivity (Details):	BLAST analysis of the peptide immunogen showed no homology with other human proteins.

Target Details

Target:	GPRC5D
Alternative Name:	GPRC5D (GPRC5D Products)

Target Details

Background: Full Gene Name: G protein-coupled receptor, family C, group 5, member D
Synonyms: MGC129713,MGC129714

Gene ID: 55507

Application Details

Application Notes: Immunohistochemistry (Formalin/PFA-fixed paraffin-embedded sections) (20 µg/mL)
The optimal working dilution should be determined by the end user.

Restrictions: For Research Use only

Handling

Format: Liquid

Buffer: In PBS (0.09 % sodium azide)

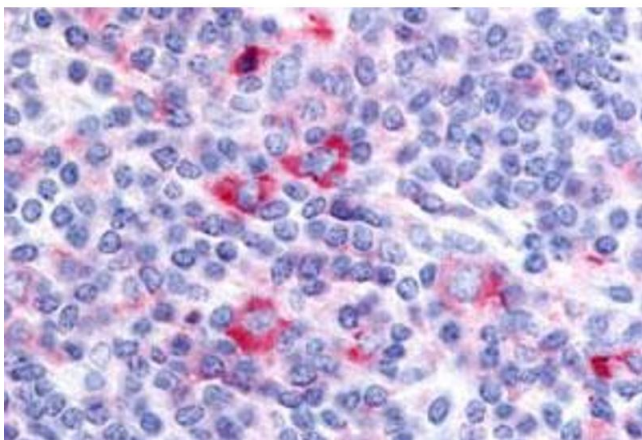
Preservative: Sodium azide

Precaution of Use: This product contains Sodium azide: a POISONOUS AND HAZARDOUS SUBSTANCE which should be handled by trained staff only.

Storage: 4 °C,-80 °C

Storage Comment: Store at 4°C. For long term storage store at -80°C.
Aliquot to avoid repeated freezing and thawing.

Images



Immunohistochemistry

Image 1. Immunohistochemical (Formalin/PFA-fixed paraffin-embedded sections) staining in human tonsil with GPRC5D polyclonal antibody . Immunohistochemistry of formalin-fixed, paraffin-embedded tissue after heat-induced antigen retrieval.