



[Go to Product page](#)

Datasheet for ABIN5579294  
**anti-GRAMD1A antibody**

1 Image

### Overview

Quantity:	100 µL
Target:	GRAMD1A
Reactivity:	Human
Host:	Rabbit
Clonality:	Polyclonal
Conjugate:	This GRAMD1A antibody is un-conjugated
Application:	Immunohistochemistry (Paraffin-embedded Sections) (IHC (p))

### Product Details

Purpose:	Rabbit polyclonal antibody raised against recombinant GRAMD1A.
Immunogen:	Recombinant protein corresponding to amino acids of human GRAMD1A.
Sequence:	SEDEDYVSPL QLNLGTPKE VGDVIALSDI TSSGAADRSQ EPSPVGSRRG HVTPNLSRAS SDADHGAEED KEEQVDSQPD ASSSQTVTPV AEPSTEPTQ PDGPTTLGPL DLLPS
Isotype:	IgG
Cross-Reactivity:	Human

### Target Details

Target:	GRAMD1A
Alternative Name:	GRAMD1A ( <a href="#">GRAMD1A Products</a> )
Background:	Full Gene Name: GRAM domain containing 1A

## Target Details

---

Synonyms: FLJ22411,FLJ90346,KIAA1533

Gene ID: 57655

## Application Details

---

Application Notes: Immunohistochemistry (1:20-1:50)  
The optimal working dilution should be determined by the end user.

Restrictions: For Research Use only

## Handling

---

Format: Liquid

Buffer: In PBS, pH 7.2 (40 % glycerol, 0.02 % sodium azide)

Preservative: Sodium azide

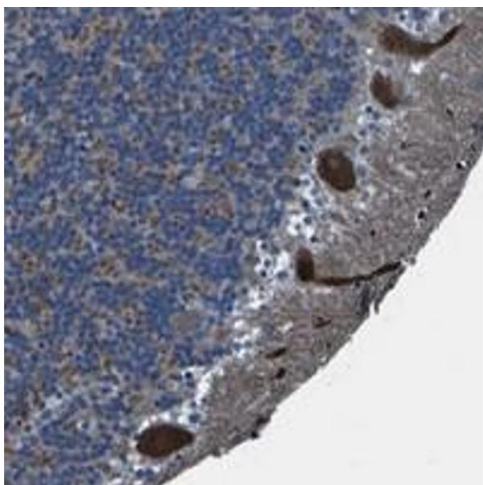
Precaution of Use: This product contains Sodium azide: a POISONOUS AND HAZARDOUS SUBSTANCE which should be handled by trained staff only.

Storage: 4 °C,-20 °C

Storage Comment: Store at 4°C. For long term storage store at -20°C.  
Aliquot to avoid repeated freezing and thawing.

## Images

---



### Immunohistochemistry

**Image 1.** Immunohistochemical staining of human cerebellum with GRAMD1A polyclonal antibody shows strong cytoplasmic positivity in Purkinje cells.