



[Go to Product page](#)

Datasheet for ABIN5579298
anti-GRAMD1C antibody

2 Images

Overview

Quantity:	100 µL
Target:	GRAMD1C
Reactivity:	Human
Host:	Rabbit
Clonality:	Polyclonal
Conjugate:	This GRAMD1C antibody is un-conjugated
Application:	Immunohistochemistry (Paraffin-embedded Sections) (IHC (p)), Western Blotting (WB)

Product Details

Purpose:	Rabbit polyclonal antibody raised against recombinant GRAMD1C.
Immunogen:	Recombinant protein corresponding to amino acids of human GRAMD1C.
Sequence:	VSTDLYRQK PWGLVKSLIE KNSWSSLEDY FKQLESLLI EESVLNQAIE DPGKLTGLRR RRRTFNRTAE TVPKLSSQHS SGDVGLGAKG
Isotype:	IgG
Cross-Reactivity:	Human

Target Details

Target:	GRAMD1C
Alternative Name:	GRAMD1C (GRAMD1C Products)
Background:	Full Gene Name: GRAM domain containing 1C

Target Details

Synonyms: DKFZp434C0328,DKFZp686K06117,FLJ35862,FLJ40464

Gene ID: 54762

Application Details

Application Notes: Immunohistochemistry (1:200-1:500)
Western Blot (1:250-1:500)
The optimal working dilution should be determined by the end user.

Restrictions: For Research Use only

Handling

Format: Liquid

Buffer: In PBS, pH 7.2 (40 % glycerol, 0.02 % sodium azide)

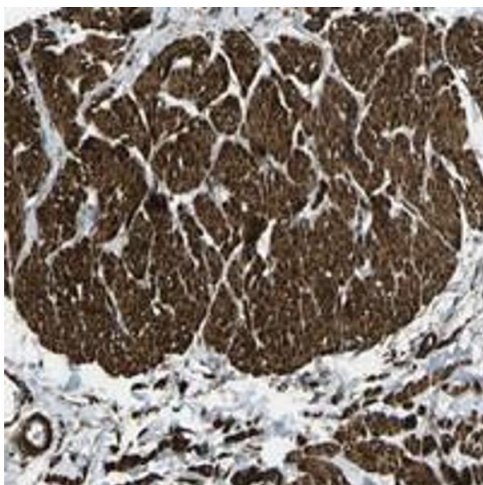
Preservative: Sodium azide

Precaution of Use: This product contains Sodium azide: a POISONOUS AND HAZARDOUS SUBSTANCE which should be handled by trained staff only.

Storage: 4 °C,-20 °C

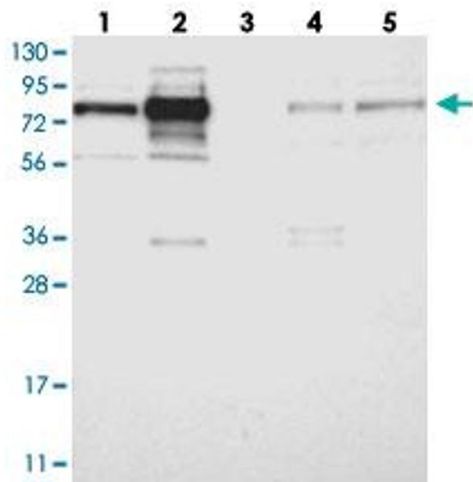
Storage Comment: Store at 4°C. For long term storage store at -20°C.
Aliquot to avoid repeated freezing and thawing.

Images



Immunohistochemistry

Image 1. Immunohistochemical staining of human smooth muscle with GRAMD1C polyclonal antibody shows strong cytoplasmic positivity in smooth muscle cells.



Western Blotting

Image 2. Western blot analysis of Lane 1: RT-4, Lane 2: U-251 MG, Lane 3: Human Plasma, Lane 4: Liver, Lane 5: Tonsil with GRAMD1C polyclonal antibody .