

Datasheet for ABIN5579384

anti-GRK5 antibody**1** Image[Go to Product page](#)

Overview

Quantity:	50 µg
Target:	GRK5
Reactivity:	Human, Mouse, Rat, Cow, Horse, Chicken, Monkey, Pig
Host:	Rabbit
Clonality:	Polyclonal
Conjugate:	This GRK5 antibody is un-conjugated
Application:	Immunohistochemistry (Paraffin-embedded Sections) (IHC (p))

Product Details

Purpose:	Rabbit polyclonal antibody raised against synthetic peptide of GRK5.
Immunogen:	A synthetic peptide (conjugated with KLH) corresponding to human GRK5.
Specificity:	Internal domain of human.
Cross-Reactivity:	Chicken, Cow, Horse, Human, Monkey, Mouse, Pig, Rat

Target Details

Target:	GRK5
Alternative Name:	GRK5 (GRK5 Products)
Background:	Full Gene Name: G protein-coupled receptor kinase 5 Synonyms: GPRK5
Gene ID:	2869

Target Details

Pathways:	Myometrial Relaxation and Contraction , Regulation of G-Protein Coupled Receptor Protein Signaling
-----------	--

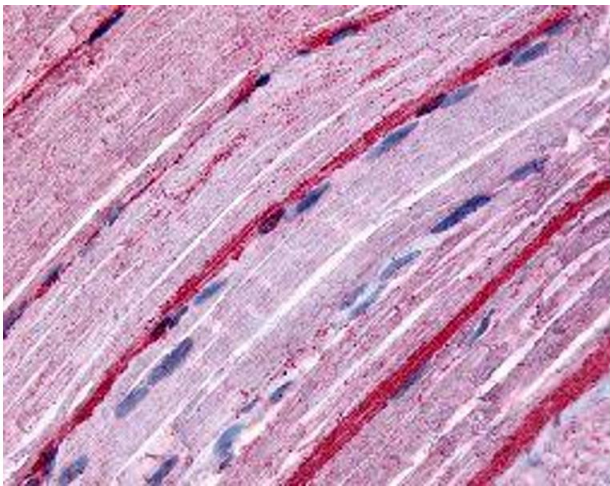
Application Details

Application Notes:	Immunohistochemistry (Formalin/PFA-fixed paraffin-embedded sections) (7 µg/mL) The optimal working dilution should be determined by the end user.
Restrictions:	For Research Use only

Handling

Format:	Liquid
Buffer:	In PBS (0.09 % sodium azide)
Preservative:	Sodium azide
Precaution of Use:	This product contains Sodium azide: a POISONOUS AND HAZARDOUS SUBSTANCE which should be handled by trained staff only.
Storage:	4 °C,-80 °C
Storage Comment:	Store at 4°C. For long term storage store at -80°C. Aliquot to avoid repeated freezing and thawing.

Images



Immunohistochemistry

Image 1. Immunohistochemical (Formalin/PFA-fixed paraffin-embedded sections) staining in human myocytes with GRK5 polyclonal antibody .