



Datasheet for ABIN5579391

anti-Metabotropic Glutamate Receptor 1 antibody



[Go to Product page](#)

1 Image

Overview

Quantity:	1 mL
Target:	Metabotropic Glutamate Receptor 1 (GRM1)
Reactivity:	Human, Mouse
Host:	Chicken
Clonality:	Polyclonal
Conjugate:	This Metabotropic Glutamate Receptor 1 antibody is un-conjugated
Application:	Immunohistochemistry (IHC), Immunocytochemistry (ICC)

Product Details

Purpose:	Chicken polyclonal antibody raised against recombinant Human GRM1.
Immunogen:	Three different KLH-conjugated synthetic peptides corresponding to different regions of GRM1 gene product, shared between the human (NP_000829.2, NCBI) and mouse (NP_058672.1, NCBI) sequences.
Isotype:	IgY
Cross-Reactivity:	Human, Mouse
Characteristics:	Immunocytochemistry

Target Details

Target:	Metabotropic Glutamate Receptor 1 (GRM1)
Alternative Name:	GRM1 (GRM1 Products)

Target Details

Background:	Full Gene Name: glutamate receptor, metabotropic 1 Synonyms: GPRC1A,GRM1A,MGLUR1,MGLUR1A,mGlu1
Gene ID:	2911, 14816

Application Details

Application Notes:	Immunocytochemistry(1:1000-1:2000) Immunohistochemistry(1:1000-1:2000) The optimal working dilution should be determined by the end user.
Restrictions:	For Research Use only

Handling

Format:	Liquid
Buffer:	In PBS, pH 7.2 (0.02 % sodium azide)
Preservative:	Sodium azide
Precaution of Use:	This product contains Sodium azide: a POISONOUS AND HAZARDOUS SUBSTANCE which should be handled by trained staff only.
Storage:	4 °C
Storage Comment:	Store at 4°C and avoid from light. Aliquot to avoid repeated freezing and thawing.

Images

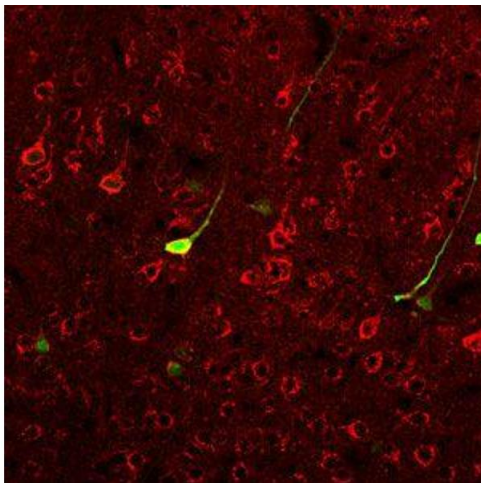


Image 1. GRM1 polyclonal antibody was validated by immunocytological staining (at a concentration of 3 ug/mL). GRM1-staining of cortical neurons in an adult transgenic mouse brain (red staining). Green staining is GFP-immunoreactivity for a subpopulation of cortical neurons.