



[Go to Product page](#)

Datasheet for ABIN5579394

anti-GRM2 antibody (Extracellular Domain)

1 Image

Overview

Quantity:	50 µg
Target:	GRM2
Binding Specificity:	Extracellular Domain
Reactivity:	Human, Rat, Mouse, Dog, Cow, Rabbit, Hamster, Pig, Gorilla
Host:	Rabbit
Clonality:	Polyclonal
Conjugate:	This GRM2 antibody is un-conjugated
Application:	Western Blotting (WB), Immunohistochemistry (Paraffin-embedded Sections) (IHC (p)), Immunocytochemistry (ICC)

Product Details

Purpose:	Rabbit polyclonal antibody raised against synthetic peptide of GRM2.
Immunogen:	A synthetic peptide corresponding to 19 amino acids at N-terminal extracellular domain of human GRM2.
Specificity:	BLAST analysis of the peptide immunogen showed no homology with other human proteins, except GRM3 (42 %).
Cross-Reactivity:	Cow, Dog, Gorilla, Hamster, Human, Mouse, Pig, Rabbit, Rat
Cross-Reactivity (Details):	BLAST analysis of the peptide immunogen showed no homology with other human proteins, except GRM3 (42 %).

Target Details

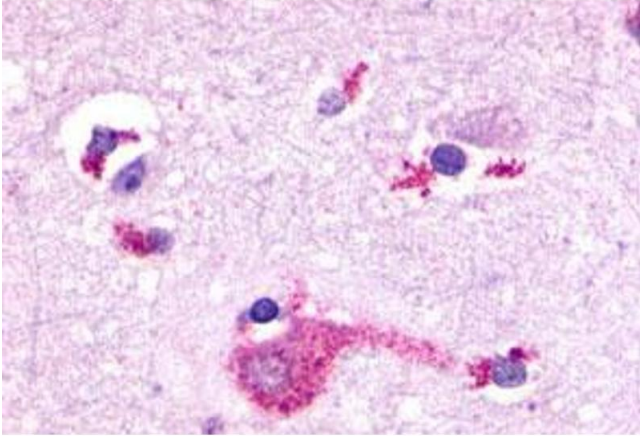
Target:	GRM2
Alternative Name:	GRM2 (GRM2 Products)
Background:	Full Gene Name: glutamate receptor, metabotropic 2 Synonyms: GLUR2,GPRC1B,MGLUR2,mGlu2
Gene ID:	2912
Pathways:	cAMP Metabolic Process , Dicarboxylic Acid Transport

Application Details

Application Notes:	Immunohistochemistry (Formalin/PFA-fixed paraffin-embedded sections) (5-10 µg/mL) The optimal working dilution should be determined by the end user.
Restrictions:	For Research Use only

Handling

Format:	Liquid
Buffer:	In PBS (0.09 % sodium azide)
Preservative:	Sodium azide
Precaution of Use:	This product contains Sodium azide: a POISONOUS AND HAZARDOUS SUBSTANCE which should be handled by trained staff only.
Storage:	4 °C,-80 °C
Storage Comment:	Store at 4°C. For long term storage store at -80°C. Aliquot to avoid repeated freezing and thawing.



Immunohistochemistry

Image 1. Immunohistochemical (Formalin/PFA-fixed paraffin-embedded sections) staining in human brain, neurons and glia with GRM2 polyclonal antibody . Immunohistochemistry of formalin-fixed, paraffin-embedded tissue after heat-induced antigen retrieval.