

Datasheet for ABIN5579400

**anti-Metabotropic Glutamate Receptor 3 antibody
(Extracellular Domain)**[Go to Product page](#)**2** Images

Overview

Quantity:	50 µg
Target:	Metabotropic Glutamate Receptor 3 (GRM3)
Binding Specificity:	Extracellular Domain
Reactivity:	Human, Cow, Horse, Monkey, Pig, Orang-Utan, Gorilla
Host:	Rabbit
Clonality:	Polyclonal
Conjugate:	This Metabotropic Glutamate Receptor 3 antibody is un-conjugated
Application:	Western Blotting (WB), Immunocytochemistry (ICC), Immunohistochemistry (Paraffin-embedded Sections) (IHC (p))

Product Details

Purpose:	Rabbit polyclonal antibody raised against synthetic peptide of GRM3.
Immunogen:	A synthetic peptide corresponding to 16 amino acids at N-terminal extracellular domain of human GRM3.
Specificity:	BLAST analysis of the peptide immunogen showed no homology with other human proteins.
Cross-Reactivity:	Cow, Gorilla, Horse, Human, Monkey, Orang-Utan, Pig
Cross-Reactivity (Details):	BLAST analysis of the peptide immunogen showed no homology with other human proteins.

Target Details

Target:	Metabotropic Glutamate Receptor 3 (GRM3)
---------	--

Target Details

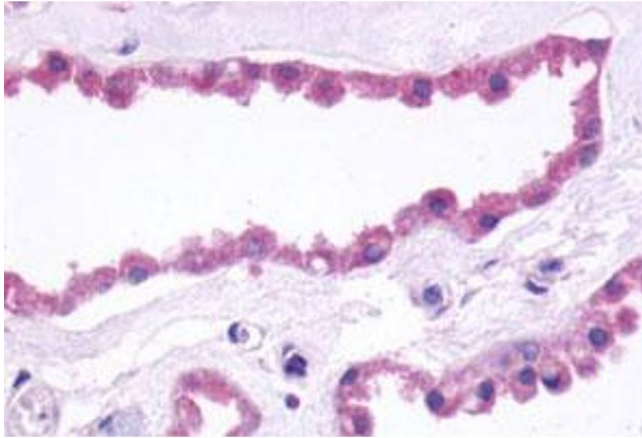
Alternative Name:	GRM3 (GRM3 Products)
Background:	Full Gene Name: glutamate receptor, metabotropic 3 Synonyms: GLUR3,GPRC1C,MGLUR3,mGlu3
Gene ID:	2913
Pathways:	cAMP Metabolic Process , Synaptic Membrane

Application Details

Application Notes:	Immunohistochemistry (Formalin/PFA-fixed paraffin-embedded sections) (38 µg/mL) The optimal working dilution should be determined by the end user.
Restrictions:	For Research Use only

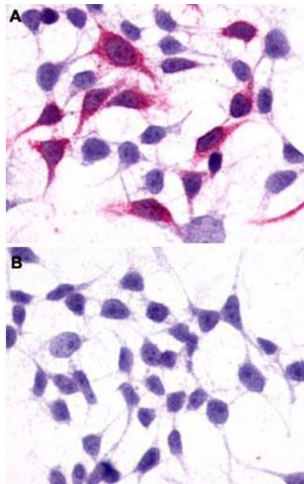
Handling

Format:	Liquid
Buffer:	In PBS (0.09 % sodium azide)
Preservative:	Sodium azide
Precaution of Use:	This product contains Sodium azide: a POISONOUS AND HAZARDOUS SUBSTANCE which should be handled by trained staff only.
Storage:	4 °C,-80 °C
Storage Comment:	Store at 4°C. For long term storage store at -80°C. Aliquot to avoid repeated freezing and thawing.



Immunohistochemistry

Image 1. Immunohistochemical (Formalin/PFA-fixed paraffin-embedded sections) staining in human brain, choroid plexus with GRM3 polyclonal antibody . Immunohistochemistry of formalin-fixed, paraffin-embedded tissue after heat-induced antigen retrieval.



Immunocytochemistry

Image 2. Immunocytochemistry (ICC) staining of HEK293 human embryonic kidney cells transfected (A) or untransfected (B) with GRM3. Using GRM3 polyclonal antibody .