

Datasheet for ABIN5579414
anti-GRM8 antibody (C-Term)[Go to Product page](#)

1 Image

Overview

Quantity:	50 µg
Target:	GRM8
Binding Specificity:	C-Term
Reactivity:	Human, Mouse, Rat, Monkey, Horse, Chimpanzee
Host:	Rabbit
Clonality:	Polyclonal
Conjugate:	This GRM8 antibody is un-conjugated
Application:	Immunohistochemistry (Paraffin-embedded Sections) (IHC (p))

Product Details

Purpose:	Rabbit polyclonal antibody raised against synthetic peptide of GRM8.
Immunogen:	A synthetic peptide corresponding to 19 amino acids at C-terminus of human GRM8.
Specificity:	BLAST analysis of the peptide immunogen showed no homology with other human proteins.
Cross-Reactivity:	Chimpanzee, Horse, Human, Monkey, Mouse, Rat
Cross-Reactivity (Details):	BLAST analysis of the peptide immunogen showed no homology with other human proteins.

Target Details

Target:	GRM8
Alternative Name:	GRM8 (GRM8 Products)
Background:	Full Gene Name: glutamate receptor, metabotropic 8

Target Details

	Synonyms: FLJ41058, GLUR8, GPRC1H, MGC126724, MGLUR8, mGlu8
Gene ID:	2918
Pathways:	cAMP Metabolic Process , Synaptic Membrane

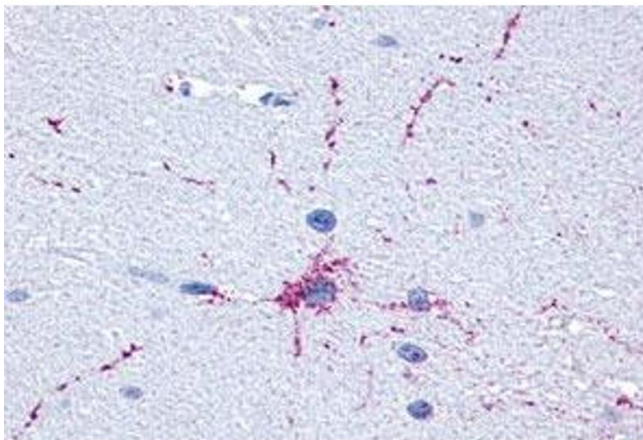
Application Details

Application Notes:	Immunohistochemistry (Formalin/PFA-fixed paraffin-embedded sections) (7-18 µg/mL) The optimal working dilution should be determined by the end user.
Restrictions:	For Research Use only

Handling

Format:	Liquid
Buffer:	In PBS (0.09 % sodium azide)
Preservative:	Sodium azide
Precaution of Use:	This product contains Sodium azide: a POISONOUS AND HAZARDOUS SUBSTANCE which should be handled by trained staff only.
Storage:	4 °C, -80 °C
Storage Comment:	Store at 4°C. For long term storage store at -80°C. Aliquot to avoid repeated freezing and thawing.

Images



Immunohistochemistry

Image 1. Immunohistochemical (Formalin/PFA-fixed paraffin-embedded sections) staining in human brain, neurons and glia with GRM8 polyclonal antibody . Immunohistochemistry of formalin-fixed, paraffin-embedded tissue after heat-induced antigen retrieval.