



[Go to Product page](#)

Datasheet for ABIN5579577

## anti-H2BFS antibody

### 2 Images

#### Overview

Quantity:	100 µL
Target:	H2BFS
Reactivity:	Human, Mouse
Host:	Rabbit
Clonality:	Polyclonal
Conjugate:	This H2BFS antibody is un-conjugated
Application:	Western Blotting (WB), Immunofluorescence (IF), Immunohistochemistry (Paraffin-embedded Sections) (IHC (p))

#### Product Details

Purpose:	Rabbit polyclonal antibody raised against synthetic peptide of H2BFS.
Immunogen:	A synthetic peptide corresponding to human H2BFS.
Specificity:	H2BFS polyclonal antibody detects endogenous levels of H2BFS protein.
Cross-Reactivity:	Human, Mouse

#### Target Details

Target:	H2BFS
Alternative Name:	H2BFS ( <a href="#">H2BFS Products</a> )
Background:	Full Gene Name: H2B histone family, member S
Gene ID:	54145

## Application Details

Application Notes: Western Blot (1:500-1:1000)  
Immunohistochemistry (1:50-1:200)  
Immunofluorescence (1:50-1:200)  
The optimal working dilution should be determined by the end user.

Restrictions: For Research Use only

## Handling

Format: Liquid

Concentration: 1 mg/mL

Buffer: In PBS, pH 7.2 (0.05 % sodium azide)

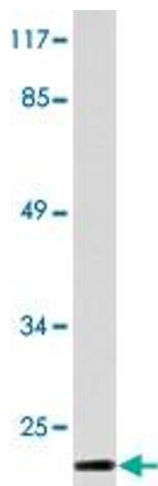
Preservative: Sodium azide

Precaution of Use: This product contains Sodium azide: a POISONOUS AND HAZARDOUS SUBSTANCE which should be handled by trained staff only.

Storage: 4 °C,-20 °C

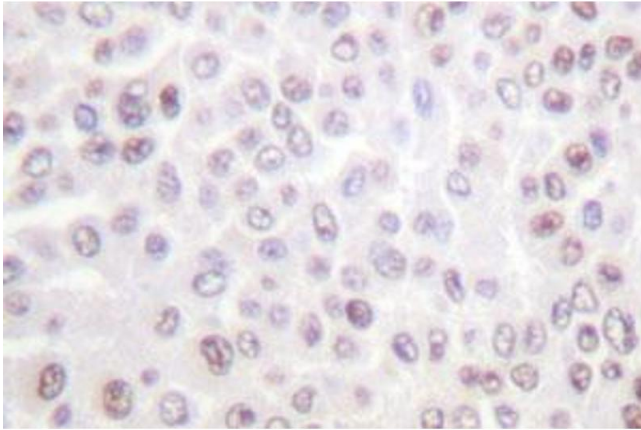
Storage Comment: Store at 4°C. For long term storage store at -20°C.  
Aliquot to avoid repeated freezing and thawing.

## Images



### Western Blotting

**Image 1.** Western blot analysis of COS-7 cell lysate with H2BFS polyclonal antibody .



### Immunohistochemistry

**Image 2.** Immunohistochemical analysis of paraffin-embedded human breast cancer tissue using H2BFS polyclonal antibody .