

Datasheet for ABIN5579595
anti-HAL antibody (C-Term)[Go to Product page](#)

2 Images

Overview

Quantity:	100 µL
Target:	HAL
Binding Specificity:	C-Term
Reactivity:	Human
Host:	Rabbit
Clonality:	Polyclonal
Conjugate:	This HAL antibody is un-conjugated
Application:	Western Blotting (WB), Immunohistochemistry (Paraffin-embedded Sections) (IHC (p))

Product Details

Purpose:	Rabbit polyclonal antibody raised against synthetic peptide of human HAL.
Immunogen:	A synthetic peptide corresponding to C-terminus of human HAL.
Sequence:	EAAHRLLEQ KVWEVAAPYI EKYRMEHIPE SRPLSPTAFS LQFLHKKSTK
Cross-Reactivity:	Human

Target Details

Target:	HAL
Alternative Name:	HAL (HAL Products)
Background:	Full Gene Name: histidine ammonia-lyase Synonyms: HIS,HSTD

Target Details

Gene ID:	3034
NCBI Accession:	NM_002108

Application Details

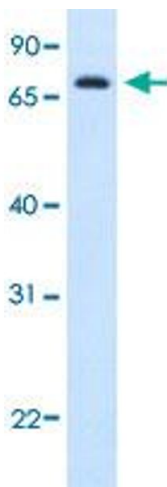
Application Notes:	Immunohistochemistry (Formalin/PFA-fixed paraffin-embedded sections) (4-8 µg/mL) Western Blot (1.25 µg/mL) The optimal working dilution should be determined by the end user.
--------------------	---

Restrictions:	For Research Use only
---------------	-----------------------

Handling

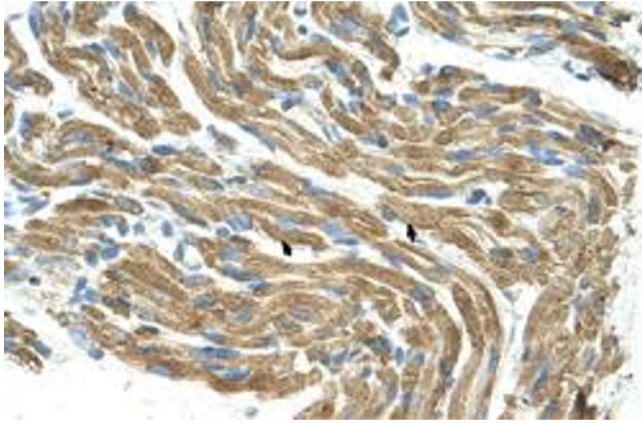
Format:	Liquid
Buffer:	In PBS (2 % sucrose, 0.09 % sodium azide).
Preservative:	Sodium azide
Precaution of Use:	This product contains Sodium azide: a POISONOUS AND HAZARDOUS SUBSTANCE which should be handled by trained staff only.
Storage:	4 °C,-20 °C
Storage Comment:	Store at 4°C. For long term storage store at -20°C. Aliquot to avoid repeated freezing and thawing.

Images



Western Blotting

Image 1. Western Blot analysis of human fetal liver tissue lysate with HAL polyclonal antibody at 1.25 ug/mL working concentration.



Immunohistochemistry

Image 2. Immunohistochemical staining (Formalin-fixed paraffin-embedded sections) of human muscle with HAL polyclonal antibody at 4-8 ug/mL working concentration.