

Datasheet for ABIN5579599

anti-HARBI1 antibody**3** Images[Go to Product page](#)

Overview

Quantity:	100 µL
Target:	HARBI1
Reactivity:	Human
Host:	Rabbit
Clonality:	Polyclonal
Conjugate:	This HARBI1 antibody is un-conjugated
Application:	Western Blotting (WB), Immunohistochemistry (Paraffin-embedded Sections) (IHC (p)), Immunofluorescence (IF)

Product Details

Purpose:	Rabbit polyclonal antibody raised against recombinant HARBI1.
Immunogen:	Recombinant protein corresponding to amino acids of human HARBI1.
Sequence:	VIEKTFRTLCSRFRCLDGSK GALQYSPEKS SHIILACCVL HNISLEHGMD VWSSPMTGPM EQPPEEEYEH MESLDLEADR IRQELM
Isotype:	IgG
Cross-Reactivity:	Human

Target Details

Target:	HARBI1
Alternative Name:	HARBI1 (HARBI1 Products)

Target Details

Background: Full Gene Name: harbinger transposase derived 1
Synonyms: C11orf77,FLJ32675

Gene ID: 283254

Application Details

Application Notes: Immunohistochemistry (1:500-1:1000)
Western Blot (1:250-1:500)
Immunofluorescence (1-4 µg/mL)
The optimal working dilution should be determined by the end user.

Restrictions: For Research Use only

Handling

Format: Liquid

Buffer: In PBS, pH 7.2 (40 % glycerol, 0.02 % sodium azide)

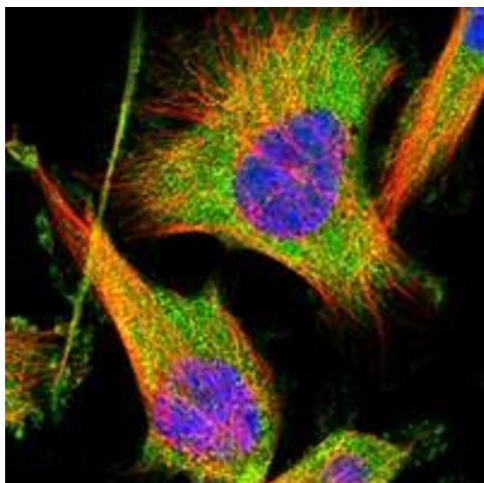
Preservative: Sodium azide

Precaution of Use: This product contains Sodium azide: a POISONOUS AND HAZARDOUS SUBSTANCE which should be handled by trained staff only.

Storage: 4 °C,-20 °C

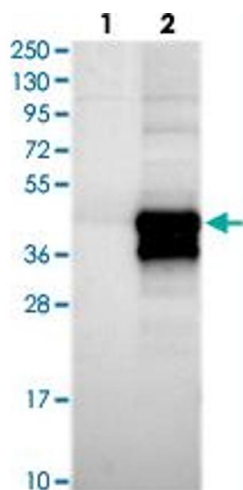
Storage Comment: Store at 4°C. For long term storage store at -20°C.
Aliquot to avoid repeated freezing and thawing.

Images



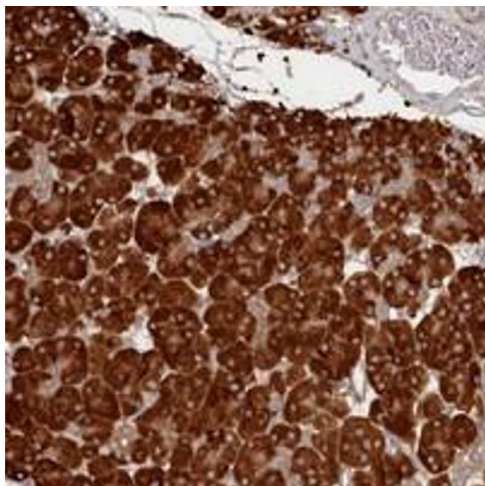
Immunofluorescence

Image 1. Immunofluorescent staining of human cell line U-251 MG with HARBI1 polyclonal antibody at 1-4 µg/mL dilution shows positivity in cytoplasm.



Western Blotting

Image 2. Western blot analysis of Lane 1: Negative control (vector only transfected HEK293T lysate), Lane 2: Over-expression Lysate (Co-expressed with a C-terminal myc-DDK tag (~3.1 kDa) in mammalian HEK293T cells) with HARBI1 polyclonal antibody at 1:250-1:500 dilution.



Immunohistochemistry

Image 3. Immunohistochemical staining of human pancreas with HARBI1 polyclonal antibody shows strong cytoplasmic positivity in exocrine glandular cells at 1:500-1:1000 dilution.