

Datasheet for ABIN5579649  
**anti-HCRTR1 antibody (C-Term)**[Go to Product page](#)

## 1 Image

## Overview

Quantity:	50 µg
Target:	HCRTR1
Binding Specificity:	C-Term
Reactivity:	Human, Dog, Monkey, Pig, Horse, Gorilla
Host:	Rabbit
Clonality:	Polyclonal
Conjugate:	This HCRTR1 antibody is un-conjugated
Application:	Immunohistochemistry (Paraffin-embedded Sections) (IHC (p))

## Product Details

Purpose:	Rabbit polyclonal antibody raised against synthetic peptide of HCRTR1.
Immunogen:	A synthetic peptide corresponding to 16 amino acids from C-terminus of human HCRTR1.
Specificity:	BLAST analysis of the peptide immunogen showed no homology with other human proteins.
Cross-Reactivity:	Dog, Gorilla, Horse, Human, Monkey, Pig
Cross-Reactivity (Details):	BLAST analysis of the peptide immunogen showed no homology with other human proteins.

## Target Details

Target:	HCRTR1
Alternative Name:	HCRTR1 ( <a href="#">HCRTR1 Products</a> )
Background:	Full Gene Name: hypocretin (orexin) receptor 1

## Target Details

	Synonyms: OX1R
Gene ID:	3061
Pathways:	<a href="#">Feeding Behaviour</a>

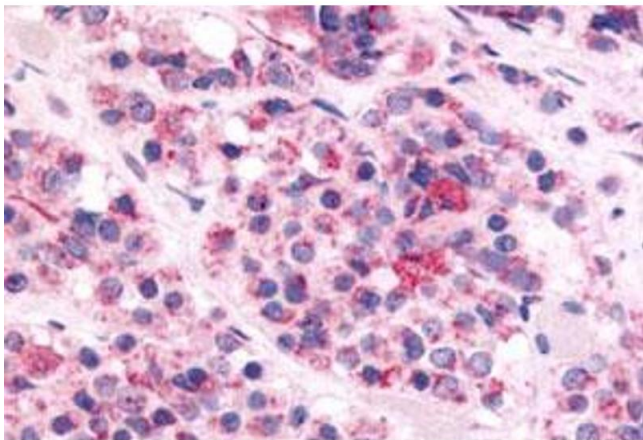
## Application Details

Application Notes:	Immunohistochemistry (Formalin/PFA-fixed paraffin-embedded sections) (14 µg/mL) The optimal working dilution should be determined by the end user.
Restrictions:	For Research Use only

## Handling

Format:	Liquid
Buffer:	In PBS (0.09 % sodium azide)
Preservative:	Sodium azide
Precaution of Use:	This product contains Sodium azide: a POISONOUS AND HAZARDOUS SUBSTANCE which should be handled by trained staff only.
Storage:	4 °C,-80 °C
Storage Comment:	Store at 4°C. For long term storage store at -80°C. Aliquot to avoid repeated freezing and thawing.

## Images



### Immunohistochemistry

**Image 1.** Immunohistochemical (Formalin/PFA-fixed paraffin-embedded sections) staining in human brain, anterior pituitary cells with HCRTR1 polyclonal antibody . Immunohistochemistry of formalin-fixed, paraffin-embedded tissue after heat-induced antigen retrieval.