

Datasheet for ABIN5579791  
**anti-HEY1 antibody (C-Term)**

## 3 Images

[Go to Product page](#)

## Overview

Quantity:	100 µL
Target:	HEY1
Binding Specificity:	C-Term
Reactivity:	Human
Host:	Rabbit
Clonality:	Polyclonal
Conjugate:	This HEY1 antibody is un-conjugated
Application:	Western Blotting (WB), Immunohistochemistry (Paraffin-embedded Sections) (IHC (p))

## Product Details

Purpose:	Rabbit polyclonal antibody raised against synthetic peptide of human HEY1.
Immunogen:	A synthetic peptide corresponding to C-terminus of human HEY1.
Sequence:	PQNGHGNAGT TASPTEPHHQ GRLGSAHPEA PALRAPPSGS FGPVLPVVTs
Cross-Reactivity:	Human

## Target Details

Target:	HEY1
Alternative Name:	HEY1 ( <a href="#">HEY1 Products</a> )
Background:	Full Gene Name: hairy/enhancer-of-split related with YRPW motif 1 Synonyms: BHLHb31,CHF2,HERP2,HESR1,HRT-1,MGC1274,OAF1

## Target Details

Gene ID:	23462
NCBI Accession:	<a href="#">NM_012258</a>
Pathways:	<a href="#">Tube Formation</a>

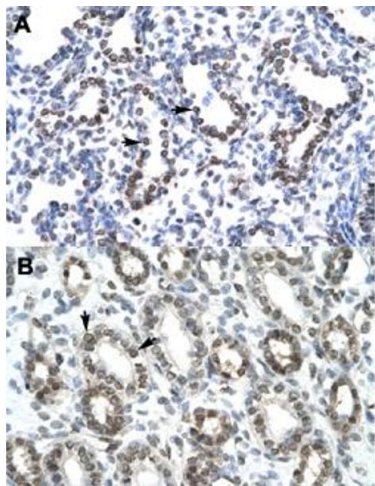
## Application Details

Application Notes:	Immunohistochemistry (Formalin/PFA-fixed paraffin-embedded sections) (4-8 µg/mL) Western Blot The optimal working dilution should be determined by the end user.
Restrictions:	For Research Use only

## Handling

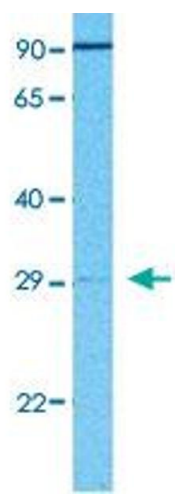
Format:	Liquid
Buffer:	In PBS (2 % sucrose, 0.09 % sodium azide).
Preservative:	Sodium azide
Precaution of Use:	This product contains Sodium azide: a POISONOUS AND HAZARDOUS SUBSTANCE which should be handled by trained staff only.
Storage:	4 °C, -20 °C
Storage Comment:	Store at 4°C. For long term storage store at -20°C. Aliquot to avoid repeated freezing and thawing.

## Images



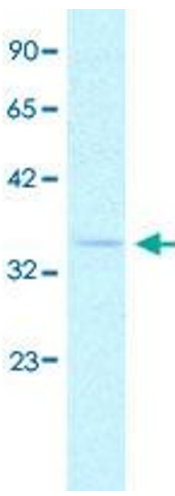
### Immunohistochemistry

**Image 1.** Immunohistochemical staining (Formalin-fixed paraffin-embedded sections) of human lung (A) and human kidney (B) with HEY1 polyclonal antibody at 4-8 ug/mL working concentration.



**Western Blotting**

**Image 2.** Western Blot analysis of 293T cell lysate with HEY1 polyclonal antibody at 1 ug/mL working concentration.



**Western Blotting**

**Image 3.** Western Blot analysis of human lung tissue lysate with HEY1 polyclonal antibody at 2.5 ug/mL working concentration.