



[Go to Product page](#)

Datasheet for ABIN5579803  
**anti-HHLA3 antibody (AA 1-122)**

2 Images

Overview

Quantity:	100 µg
Target:	HHLA3
Binding Specificity:	AA 1-122
Reactivity:	Human
Host:	Rabbit
Clonality:	Polyclonal
Conjugate:	This HHLA3 antibody is un-conjugated
Application:	ELISA, Western Blotting (WB), Immunohistochemistry (Paraffin-embedded Sections) (IHC (p))

Product Details

Purpose:	Rabbit polyclonal antibody raised against partial recombinant HHLA3.
Immunogen:	Recombinant protein corresponding to amino acids 1-122 of human HHLA3.
Specificity:	This antibody is specific to HHLA3.
Cross-Reactivity:	Human

Target Details

Target:	HHLA3
Alternative Name:	HHLA3 ( <a href="#">HHLA3 Products</a> )
Background:	Full Gene Name: HERV-H LTR-associating 3
Gene ID:	11147

## Application Details

---

Application Notes: Western Blot (1:1000-1:2000)  
Immunohistochemistry (1:100-1:500)  
ELISA (1:20000-1:80000)  
The optimal working dilution should be determined by the end user.

---

Restrictions: For Research Use only

---

## Handling

---

Format: Liquid

---

Buffer: In buffer containing 0.02 % sodium azide

---

Preservative: Sodium azide

---

Precaution of Use: This product contains Sodium azide: a POISONOUS AND HAZARDOUS SUBSTANCE which should be handled by trained staff only.

---

Storage: 4 °C, -20 °C

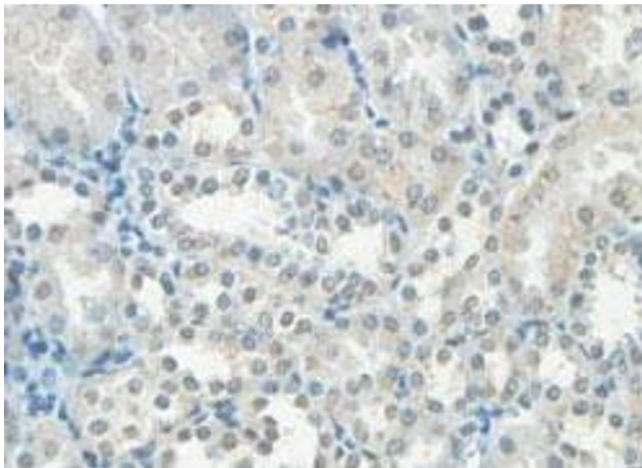
---

Storage Comment: Store at 4°C for three months. For long term storage store at -20°C.  
Aliquot to avoid repeated freezing and thawing.

---

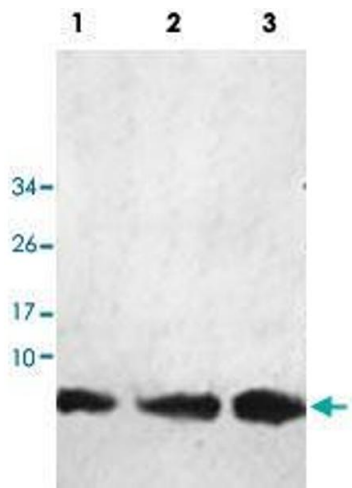
## Images

---



### Immunohistochemistry

**Image 1.** Immunohistochemical analysis of paraffin-embedded human fetal kidney showing cytoplasmic staining with HHLA3 polyclonal antibody at a 1 : 100 dilution.



### Western Blotting

**Image 2.** Western blot analysis of human fetal kidney (Lane 1), fetal liver (Lane 2) and fetal heart (Lane 3) lysate with HHLA3 polyclonal antibody at 1 : 1000 dilution.