



[Go to Product page](#)

Datasheet for ABIN5579816  
**anti-HIGD2A antibody (C-Term)**

1 Image

### Overview

Quantity:	100 µg
Target:	HIGD2A
Binding Specificity:	C-Term
Reactivity:	Human, Mouse
Host:	Rabbit
Clonality:	Polyclonal
Conjugate:	This HIGD2A antibody is un-conjugated
Application:	Western Blotting (WB), ELISA

### Product Details

Purpose:	Rabbit polyclonal antibody raised against synthetic peptide of HIGD2A.
Immunogen:	A synthetic peptide corresponding to 16 amino acids at C-terminus of human HIGD2A.
Isotype:	IgG
Specificity:	At least two isoforms of Hypoxia Inducible Domain Family Member are known to exist, this antibody will detect both isoforms.
Cross-Reactivity:	Human, Mouse

### Target Details

Target:	HIGD2A
Alternative Name:	HIGD2A ( <a href="#">HIGD2A Products</a> )

## Target Details

Background: Full Gene Name: HIG1 domain family, member 2A  
Synonyms: MGC2198

Gene ID: 192286

## Application Details

Application Notes: Western Blot (1 µg/mL)  
The optimal working dilution should be determined by the end user.

Restrictions: For Research Use only

## Handling

Format: Liquid

Concentration: 1 mg/mL

Buffer: In PBS (0.02 % sodium azide)

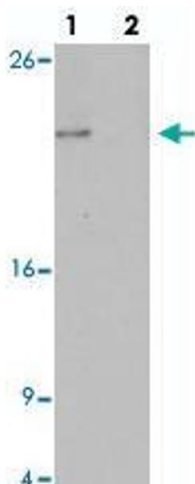
Preservative: Sodium azide

Precaution of Use: This product contains Sodium azide: a POISONOUS AND HAZARDOUS SUBSTANCE which should be handled by trained staff only.

Storage: 4 °C, -20 °C

Storage Comment: Store at 4°C for three months. For long term storage store at -20°C.  
Aliquot to avoid repeated freezing and thawing.

## Images



### Western Blotting

**Image 1.** Western blot analysis of HIGD2A in NIH/3T3 cell lysate with HIGD2A polyclonal antibody at 1 µg/mL in (lane 1) the absence and (lane 2) the presence of blocking peptide.