

Datasheet for ABIN5579851  
**anti-His Tag antibody (N-Term)**

## 3 Images

[Go to Product page](#)

## Overview

Quantity:	100 µg
Target:	His Tag
Binding Specificity:	N-Term
Reactivity:	Please inquire
Host:	Rabbit
Clonality:	Monoclonal
Conjugate:	This His Tag antibody is un-conjugated
Application:	Western Blotting (WB), Immunoprecipitation (IP), Flow Cytometry (FACS), Immunocytochemistry (ICC), Immunohistochemistry (Paraffin-embedded Sections) (IHC (p))

## Product Details

Purpose:	Recombinant rabbit monoclonal antibody raised against of His-Tag.
Immunogen:	Original antibody is raised against a mixture of synthetic peptides corresponding to N-terminus region of 6X His-Tag and C-terminus region of 6X His-Tag.
Clone:	RM146
Isotype:	IgG
Specificity:	This antibody reacts to recombinant proteins containing the 6X His-Tag or 10X His-Tag fused to either the amino or carboxy terminus. No cross reactivity with other endogenous protein in mammalian or bacteria cells.

## Target Details

Target:	His Tag
Alternative Name:	His-Tag ( <a href="#">His Tag Products</a> )
Target Type:	Tag

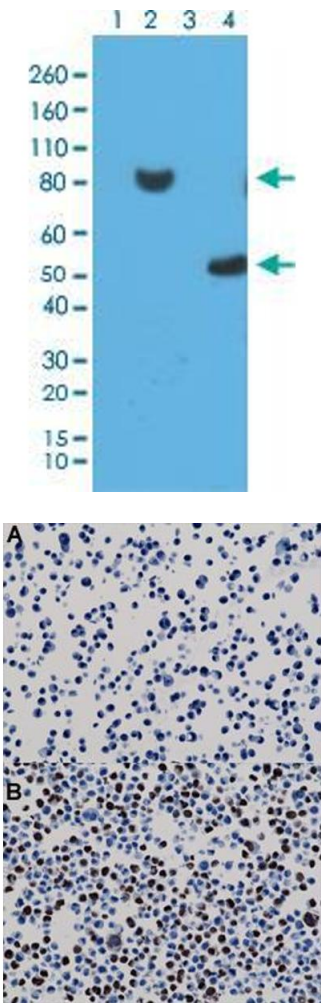
## Application Details

Application Notes:	Flow Cytometry (0.5 µg/mL-2 µg/mL) Immunocytochemistry (0.5 µg/mL-2 µg/mL) Immunohistochemistry (0.1 µg/mL-1 µg/mL) Immunoprecipitation (0.5 µg/mL-2 µg/mL) Western Blot (0.1 µg/mL-1 µg/mL) The optimal working dilution should be determined b
--------------------	---

Restrictions:	For Research Use only
---------------	-----------------------

## Handling

Format:	Liquid
Buffer:	In PBS (50 % glycerol, 1 % BSA, 0.09 % sodium azide)
Preservative:	Sodium azide
Precaution of Use:	This product contains Sodium azide: a POISONOUS AND HAZARDOUS SUBSTANCE which should be handled by trained staff only.
Storage:	-20 °C
Storage Comment:	Store at -20°C. Aliquot to avoid repeated freezing and thawing.



### Western Blotting

**Image 1.** Western blot analysis of 293T cell Lane 1: untransfected with His-Tag fusion protein X, Lane 2: transfected with His-Tag fusion protein X, Lane 3: E. coli lysate without His-Tag Protein Y and Lane 4: E. coli lysate with His-Tag Protein Y with His-Tag monoclonal antibody, clone RM146 at 0.2 ug/mL working concentration.

### Immunohistochemistry

**Image 2.** Immunohistochemical staining (Formalin-fixed paraffin-embedded sections) of naive HepG2 cells (Negative control) (A) and 293T cells expressing His-Tag nuclear protein X (B) with His-Tag monoclonal antibody, clone RM146 .

### Immunoprecipitation

**Image 3.** Immunoprecipitation analysis of 293T cells expressing a His-Tag fusion protein with His-Tag monoclonal antibody, clone RM146 . Lane 1: whole lysate (Control), Lane 2: IP by rabbit IgG (Control) and Lane 3: IP by His-Tag monoclonal antibody, clone RM146 .