

Datasheet for ABIN5579856
anti-HIST1H2BH antibody[Go to Product page](#)

2 Images

Overview

Quantity:	100 µL
Target:	HIST1H2BH
Reactivity:	Human, Mouse
Host:	Rabbit
Clonality:	Polyclonal
Conjugate:	This HIST1H2BH antibody is un-conjugated
Application:	Western Blotting (WB), Immunofluorescence (IF), Immunohistochemistry (Paraffin-embedded Sections) (IHC (p))

Product Details

Purpose:	Rabbit polyclonal antibody raised against synthetic peptide of HIST1H2BH.
Immunogen:	A synthetic peptide corresponding to human HIST1H2BH.
Specificity:	HIST1H2BH polyclonal antibody detects endogenous levels of HIST1H2BH protein.
Cross-Reactivity:	Human, Mouse

Target Details

Target:	HIST1H2BH
Alternative Name:	HIST1H2BH (HIST1H2BH Products)
Background:	Full Gene Name: histone cluster 1, H2bh Synonyms: H2B/j,H2BFJ

Target Details

Gene ID:	8345
Pathways:	Telomere Maintenance

Application Details

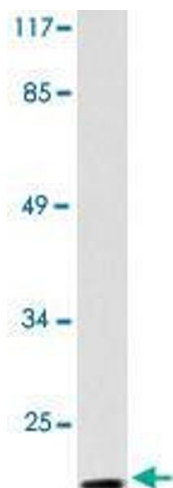
Application Notes:	Western Blot (1:500-1:1000) Immunohistochemistry (1:50-1:200) Immunofluorescence (1:50-1:200) The optimal working dilution should be determined by the end user.
--------------------	---

Restrictions:	For Research Use only
---------------	-----------------------

Handling

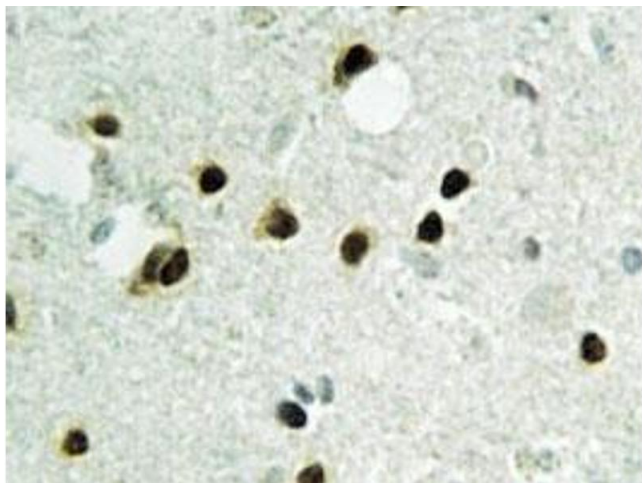
Format:	Liquid
Concentration:	1 mg/mL
Buffer:	In PBS, pH 7.2 (0.05 % sodium azide)
Preservative:	Sodium azide
Precaution of Use:	This product contains Sodium azide: a POISONOUS AND HAZARDOUS SUBSTANCE which should be handled by trained staff only.
Storage:	4 °C,-20 °C
Storage Comment:	Store at 4°C. For long term storage store at -20°C. Aliquot to avoid repeated freezing and thawing.

Images



Western Blotting

Image 1. Western blot analysis of A-549 cell lysate with HIST1H2BH polyclonal antibody .



Immunohistochemistry

Image 2. Immunohistochemical analysis of paraffin-embedded human brain tissue using HIST1H2BH polyclonal antibody .