

Datasheet for ABIN5579863
anti-HIST1H3E antibody (pSer28)[Go to Product page](#)

2 Images

Overview

Quantity:	100 µg
Target:	HIST1H3E
Binding Specificity:	pSer28
Reactivity:	Human, Mouse, Rat
Host:	Rabbit
Clonality:	Polyclonal
Conjugate:	This HIST1H3E antibody is un-conjugated
Application:	ELISA, Western Blotting (WB), Immunohistochemistry (Paraffin-embedded Sections) (IHC (p))

Product Details

Purpose:	Rabbit polyclonal antibody raised against synthetic phosphopeptide of HIST1H3E.
Immunogen:	Synthetic phosphopeptide corresponding to residues surrounding S28 of human HIST1H3E.
Specificity:	This antibody detects endogenous levels of HIST1H3E only when phosphorylated at serine 28.
Cross-Reactivity:	Human, Mouse, Rat

Target Details

Target:	HIST1H3E
Alternative Name:	HIST1H3E (HIST1H3E Products)
Background:	Full Gene Name: histone cluster 1, H3e Synonyms: H3.1,H3/d,H3FD

Target Details

Gene ID: 8353

Application Details

Application Notes: Western Blot (1:500-1:1000)
Immunohistochemistry (1:50-1:100)
ELISA (1:4000)
The optimal working dilution should be determined by the end user.

Restrictions: For Research Use only

Handling

Format: Liquid

Buffer: In 20 mM PBS, 0.15 M NaCl, pH 7.2 (0.01 % sodium azide)

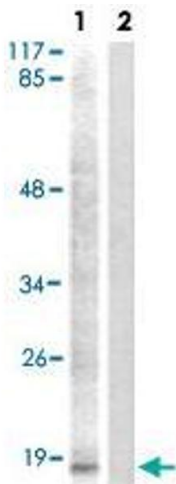
Preservative: Sodium azide

Precaution of Use: This product contains Sodium azide: a POISONOUS AND HAZARDOUS SUBSTANCE which should be handled by trained staff only.

Storage: 4 °C,-20 °C

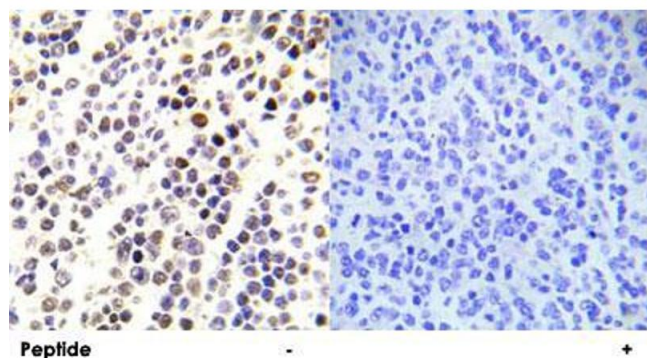
Storage Comment: Store at 4°C for three months. For long term storage store at -20°C.
Aliquot to avoid repeated freezing and thawing.

Images



Western Blotting

Image 1. Western blot analysis of extracts from HUVEC cells treated with Serum. Lane 1 : Using HIST1H3E (phospho S28) polyclonal antibody . Lane 2 : Using the same antibody preincubated with synthesized peptide.



Immunohistochemistry

Image 2. Immunohistochemical analysis of paraffin-embedded human malignant lymphoma tissue using HIST1H3E (phospho S28) polyclonal antibody .