

Datasheet for ABIN5579883  
**anti-HIST1H2AE antibody (C-Term)**[Go to Product page](#)

## 2 Images

## Overview

Quantity:	100 µg
Target:	HIST1H2AE
Binding Specificity:	C-Term
Reactivity:	Human
Host:	Rabbit
Clonality:	Monoclonal
Conjugate:	This HIST1H2AE antibody is un-conjugated
Application:	Western Blotting (WB), ELISA, Immunocytochemistry (ICC)

## Product Details

Purpose:	Recombinant rabbit monoclonal antibody raised against of human histone H2A.
Immunogen:	Original antibody is raised against a synthetic peptide corresponding to C-terminus of human Histone H2A.
Clone:	RM225
Isotype:	IgG
Cross-Reactivity:	Human

## Target Details

Target:	HIST1H2AE
Alternative Name:	HIST1H2AE ( <a href="#">HIST1H2AE Products</a> )

## Target Details

Background: Full Gene Name: histone cluster 1, H2ae  
Synonyms: H2A.1,H2A.2,H2A/a,H2AFA

Gene ID: 3012, 8334, 95815

Pathways: [Telomere Maintenance](#)

## Application Details

Application Notes: ELISA (0.2-1 µg/mL)  
Immunocytochemistry (1-2 µg/mL)  
Multiplex (0.2-1 µg/mL)  
Western Blot (0.5-2 µg/mL)  
The optimal working dilution should be determined by the end user.

Restrictions: For Research Use only

## Handling

Format: Liquid

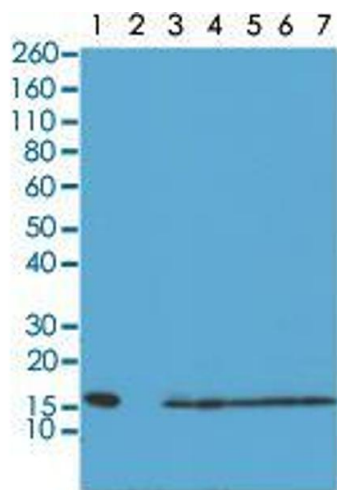
Buffer: In PBS (50 % glycerol, 1 % BSA, 0.09 % sodium azide)

Preservative: Sodium azide

Precaution of Use: This product contains Sodium azide: a POISONOUS AND HAZARDOUS SUBSTANCE which should be handled by trained staff only.

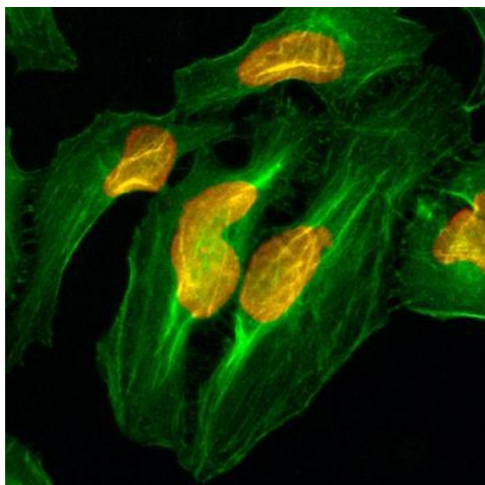
Storage: -20 °C

Storage Comment: Store at -20°C.  
Aliquot to avoid repeated freezing and thawing.



Western Blotting

**Image 1.** Western blot analysis of Lane 1: recombinant Histone H2A, Lane 2: recombinant Histone H2B, Lane 3: HeLa, Lane 4: A375, Lane 5: SK-MEL-2, Lane 6: A431, Lane 7: K562 whole cell lysates with Histone H2A monoclonal antibody, clone RM225 at 0.5 ug/mL working concentration.



Immunocytochemistry

**Image 2.** Immunocytochemistry staining of HeLa cells with Histone H2A monoclonal antibody, clone RM225 (Red). Actin filaments was labeled with fluorescein phalloidin (Green).