

Datasheet for ABIN5579884
anti-HIST1H2AE antibody (pSer1)[Go to Product page](#)

1 Image

Overview

Quantity:	100 µg
Target:	HIST1H2AE
Binding Specificity:	pSer1
Reactivity:	Human
Host:	Rabbit
Clonality:	Monoclonal
Conjugate:	This HIST1H2AE antibody is un-conjugated
Application:	Western Blotting (WB), ELISA

Product Details

Purpose:	Recombinant rabbit monoclonal antibody raised against of human histone H2A/H4 (S1).
Immunogen:	Original antibody is raised against a synthetic phosphopeptide corresponding to residues surrounding S1 of human Histone H2A.
Clone:	RM216
Isotype:	IgG
Specificity:	This antibody reacts to Histone H4 or Histone H2A phosphorylated at Serine 1. No cross reactivity with other phosphorylated Histones.

Target Details

Target:	HIST1H2AE
---------	-----------

Target Details

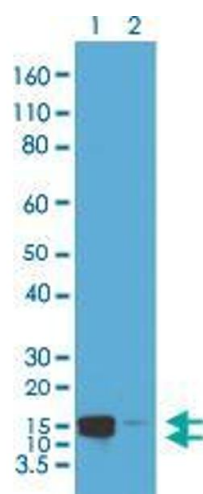
Alternative Name:	HIST1H2AE (HIST1H2AE Products)
Background:	Full Gene Name: histone cluster 1, H2ae Synonyms: H2A.1,H2A.2,H2A/a,H2AFA
Gene ID:	3012, 121504
Pathways:	Telomere Maintenance

Application Details

Application Notes:	ELISA (0.2 µg/mL-1 µg/mL) Western Blot (0.5 µg/mL-2 µg/mL) The optimal working dilution should be determined by the end user.
Restrictions:	For Research Use only

Handling

Format:	Liquid
Buffer:	In PBS (50 % glycerol, 1 % BSA, 0.09 % sodium azide)
Preservative:	Sodium azide
Precaution of Use:	This product contains Sodium azide: a POISONOUS AND HAZARDOUS SUBSTANCE which should be handled by trained staff only.
Storage:	-20 °C
Storage Comment:	Store at -20°C. Aliquot to avoid repeated freezing and thawing.



Western Blotting

Image 1. Western Blot analysis of Lane 1: acid extracts of HeLa cell treated with Nocodazole and Lane 2: acid extracts of HeLa cell untreated with Histone H2A/H4 (phospho S1) monoclonal antibody, clone RM216 at 0.5 ug/mL working concentration, showed a band of Histone H2A and H4 phosphorylated at Serine 1.