

Datasheet for ABIN5579891
anti-HIST1H2BB antibody (acLys23)

2 Images

[Go to Product page](#)

Overview

Quantity:	100 µg
Target:	HIST1H2BB
Binding Specificity:	acLys23
Reactivity:	Human
Host:	Rabbit
Clonality:	Monoclonal
Conjugate:	This HIST1H2BB antibody is un-conjugated
Application:	ELISA, Western Blotting (WB), Immunocytochemistry (ICC)

Product Details

Purpose:	Recombinant rabbit monoclonal antibody raised against of human histone H2B (acetyl K23).
Immunogen:	Original antibody is raised against a synthetic acetyl peptide corresponding to residues surrounding K23 of human Histone H2B.
Clone:	RM260
Isotype:	IgG
Specificity:	This antibody reacts to histone H2B acetylated at K23. No cross reactivity with other acetylated lysines in histones.
Cross-Reactivity:	Human

Target Details

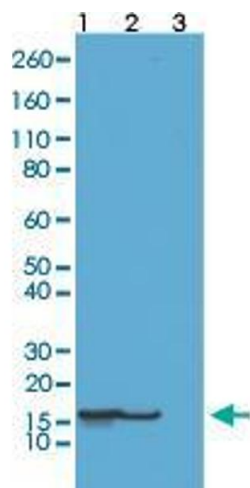
Target:	HIST1H2BB
Alternative Name:	HIST1H2BB (HIST1H2BB Products)
Background:	Full Gene Name: histone cluster 1, H2bb Synonyms: H2B.1,H2B/f,H2BFF,MGC119804
Gene ID:	3018
Pathways:	Telomere Maintenance

Application Details

Application Notes:	ELISA (0.2-1 µg/mL) Immunocytochemistry (0.5-2 µg/mL) Multiplex (0.1-0.5 µg/mL) Western Blot (0.5-2 µg/mL) The optimal working dilution should be determined by the end user.
Restrictions:	For Research Use only

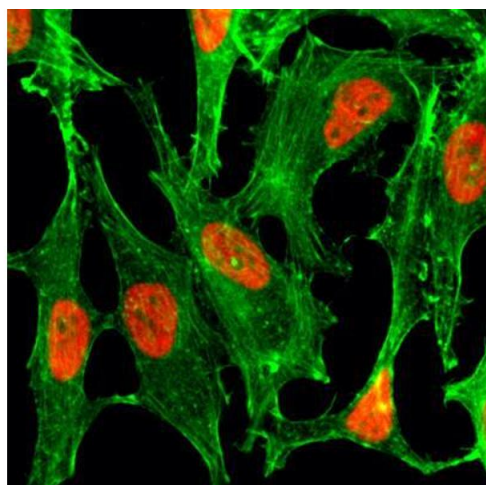
Handling

Format:	Liquid
Buffer:	In PBS (50 % glycerol, 1 % BSA, 0.09 % sodium azide)
Preservative:	Sodium azide
Precaution of Use:	This product contains Sodium azide: a POISONOUS AND HAZARDOUS SUBSTANCE which should be handled by trained staff only.
Storage:	-20 °C
Storage Comment:	Store at -20°C. Aliquot to avoid repeated freezing and thawing.



Western Blotting

Image 1. Western Blot analysis of Lane 1: acid extracts of HeLa cell treated with sodium butyrate, Lane 2: acid extracts of HeLa cell and Lane 3: recombinant histone H2B with Histone H2B (acetyl K23) monoclonal antibody, clone RM260 at 0.5 ug/mL working concentration.



Immunocytochemistry

Image 2. Immunocytochemistry staining of HeLa cells treated with sodium butyrate using Histone H2B (acetyl K23) monoclonal antibody, clone RM260 (Red). Actin filaments have been labeled with fluorescein phalloidin (Green).