

Datasheet for ABIN5579892
anti-HIST1H2BB antibody (pSer14)

2 Images

[Go to Product page](#)

Overview

Quantity:	100 µg
Target:	HIST1H2BB
Binding Specificity:	pSer14
Reactivity:	Human
Host:	Rabbit
Clonality:	Monoclonal
Conjugate:	This HIST1H2BB antibody is un-conjugated
Application:	ELISA, Western Blotting (WB), Immunocytochemistry (ICC)

Product Details

Purpose:	Recombinant rabbit monoclonal antibody raised against of human histone H2B (S14).
Immunogen:	Original antibody is raised against a synthetic phosphopeptide corresponding to residues surrounding S14 of human Histone H2B.
Clone:	RM238
Isotype:	IgG
Specificity:	This antibody reacts to histone H2B only when phosphorylated at S14. No cross reactivity with other phosphorylated histones.
Cross-Reactivity:	Human

Target Details

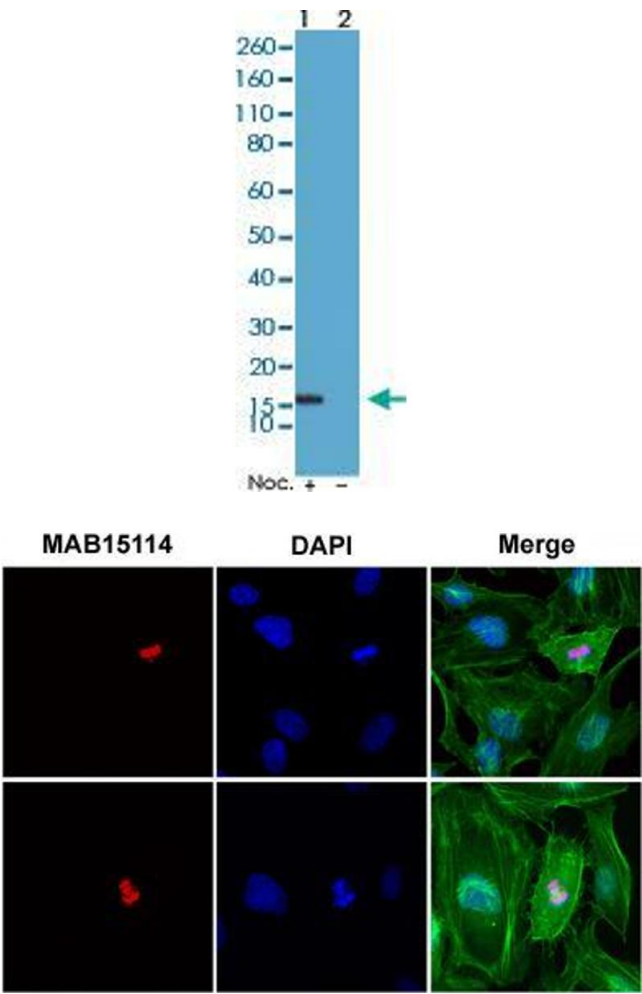
Target:	HIST1H2BB
Alternative Name:	HIST1H2BB (HIST1H2BB Products)
Background:	Full Gene Name: histone cluster 1, H2bb Synonyms: H2B.1,H2B/f,H2BFF,MGC119804
Gene ID:	3018
Pathways:	Telomere Maintenance

Application Details

Application Notes:	ELISA (0.2-1 µg/mL) Immunocytochemistry (1-2 µg/mL) Multiplex (0.1-1 µg/mL) Western Blot (0.5-2 µg/mL) The optimal working dilution should be determined by the end user.
Restrictions:	For Research Use only

Handling

Format:	Liquid
Buffer:	In PBS (50 % glycerol, 1 % BSA, 0.09 % sodium azide)
Preservative:	Sodium azide
Precaution of Use:	This product contains Sodium azide: a POISONOUS AND HAZARDOUS SUBSTANCE which should be handled by trained staff only.
Storage:	-20 °C
Storage Comment:	Store at -20°C. Aliquot to avoid repeated freezing and thawing.



Western Blotting

Image 1. Western Blot analysis of Lane 1: acid extracts of HeLa cell treated with Nocodazole and Lane 2: acid extracts of HeLa cell with Histone H2B (phospho S14) monoclonal antibody, clone RM238 at 0.5 ug/mL working concentration.

Immunocytochemistry

Image 2. Immunocytochemistry staining of HeLa cells with Histone H2B (phospho S14) monoclonal antibody, clone RM238 (Red) and DAPI (Blue). Actin filaments have been labeled with fluorescein phalloidin (Green).