

Datasheet for ABIN5579927  
**anti-Histone H3.3 antibody (pSer10)**[Go to Product page](#)

## 2 Images

## Overview

Quantity:	400 µL
Target:	Histone H3.3 (H3F3A)
Binding Specificity:	pSer10
Reactivity:	Human
Host:	Rabbit
Clonality:	Polyclonal
Conjugate:	This Histone H3.3 antibody is un-conjugated
Application:	Western Blotting (WB), Immunohistochemistry (Paraffin-embedded Sections) (IHC (p))

## Product Details

Purpose:	Rabbit polyclonal antibody raised against synthetic phosphopeptide of Histone H3.
Immunogen:	Synthetic phosphopeptide (conjugated with KLH) corresponding to residues surrounding S10 of human Histone H3.
Cross-Reactivity:	Human

## Target Details

Target:	Histone H3.3 (H3F3A)
Alternative Name:	H3F3A ( <a href="#">H3F3A Products</a> )
Background:	Full Gene Name: H3 histone, family 3A Synonyms: H3.3A,H3F3,MGC87782,MGC87783

## Target Details

Gene ID: 3020, 3021

## Application Details

Application Notes: Immunohistochemistry (Formalin/PFA-fixed paraffin-embedded sections) (1:50-100)  
Western Blot (1:1000)  
The optimal working dilution should be determined by the end user.

Restrictions: For Research Use only

## Handling

Format: Liquid

Buffer: In PBS (0.09 % sodium azide)

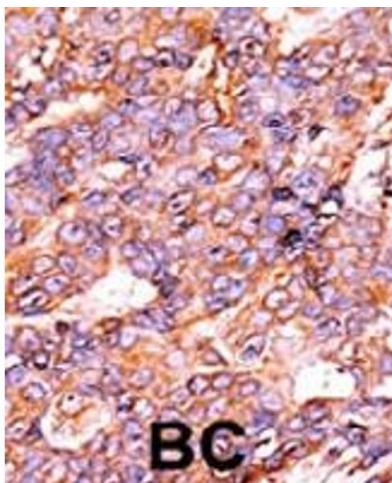
Preservative: Sodium azide

Precaution of Use: This product contains Sodium azide: a POISONOUS AND HAZARDOUS SUBSTANCE which should be handled by trained staff only.

Storage: 4 °C, -20 °C

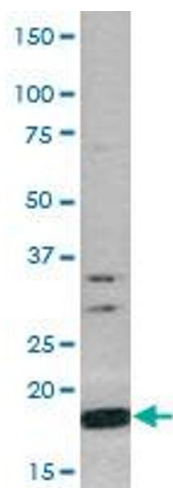
Storage Comment: Store at 4°C. For long term storage store at -20°C.  
Aliquot to avoid repeated freezing and thawing.

## Images



### Immunohistochemistry

**Image 1.** Immunohistochemistry (Formalin/PFA-fixed paraffin-embedded sections) of human breast carcinoma with Histone H3 (phospho S10) polyclonal antibody , followed by peroxidase-conjugated secondary antibody and AEC staining.



Western Blotting

**Image 2.** Western Blot (Cell lysate) analysis of CEM cell lysate with Histone H3 (phospho S10) polyclonal antibody .