



[Go to Product page](#)

Datasheet for ABIN5579950
anti-HIST4H4 antibody (3meLys20)

1 Image

Overview

Quantity:	100 µg
Target:	HIST4H4
Binding Specificity:	3meLys20
Reactivity:	Human
Host:	Rabbit
Clonality:	Monoclonal
Conjugate:	This HIST4H4 antibody is un-conjugated
Application:	Western Blotting (WB), ELISA

Product Details

Purpose:	Recombinant rabbit monoclonal antibody raised against of human histone H4 (trimethyl K20).
Immunogen:	Original antibody is raised against a synthetic trimethyl peptide corresponding to residues surrounding K20 of human Histone H4.
Clone:	RM208
Isotype:	IgG
Specificity:	This antibody reacts to Histone H4 trimethylated at Lysine 20. It may slightly cross react to dimethylated Lysine 20 at a higher concentration. No cross reactivity with non-modified Lysine 20, monomethylated Lysine 20, or other methylations in histone H4.

Target Details

Target:	HIST4H4
---------	---------

Target Details

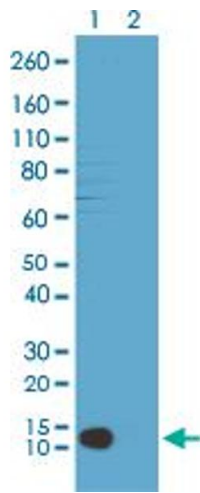
Alternative Name:	HIST4H4 (HIST4H4 Products)
Background:	Full Gene Name: histone cluster 4, H4 Synonyms: H4/p,MGC24116
Gene ID:	121504
Pathways:	Telomere Maintenance

Application Details

Application Notes:	ELISA (0.5 µg/mL-1 µg/mL) Western Blot (1 µg/mL-2 µg/mL) The optimal working dilution should be determined by the end user.
Restrictions:	For Research Use only

Handling

Format:	Liquid
Buffer:	In PBS (50 % glycerol, 1 % BSA, 0.09 % sodium azide)
Preservative:	Sodium azide
Precaution of Use:	This product contains Sodium azide: a POISONOUS AND HAZARDOUS SUBSTANCE which should be handled by trained staff only.
Storage:	-20 °C
Storage Comment:	Store at -20°C. Aliquot to avoid repeated freezing and thawing.



Western Blotting

Image 1. Western blot analysis of Lane 1: acid extracts of HeLa cell and Lane 2: recombinant Histone H4 with Histone H4 (trimethyl K20) monoclonal antibody, clone RM208 at 1 ug/mL working concentration, showed a band of Histone H4 trimethylated at Lysine 20.