

Datasheet for ABIN5579969

**anti-HLA-A antibody****1** Image[Go to Product page](#)

## Overview

Quantity:	100 µg
Target:	HLA-A
Reactivity:	Human
Host:	Mouse
Clonality:	Monoclonal
Conjugate:	This HLA-A antibody is un-conjugated
Application:	Flow Cytometry (FACS), Western Blotting (WB), ELISA, Immunoprecipitation (IP), Functional Studies (Func), Immunohistochemistry (Frozen Sections) (IHC (fro))

## Product Details

Purpose:	Mouse monoclonal antibody raised against native HLA-A.
Immunogen:	Native purified HLA-A from membrane of human tonsil cells.
Clone:	W6-32
Isotype:	IgG2a
Specificity:	This antibody recognizes MHC Class I molecules (MHC Class Ia) that are expressed on the surface of all human nucleated cell types. This antibody is also suitable as a positive control for HLA tissue typing and crossmatching.
Cross-Reactivity:	Cat, Cow, Human, Non-Human Primate

## Target Details

Target:	HLA-A
---------	-------

## Target Details

Alternative Name:	HLA-A ( <a href="#">HLA-A Products</a> )
Background:	Full Gene Name: major histocompatibility complex, class I, A Synonyms: HLAA
Gene ID:	3105
Pathways:	<a href="#">TCR Signaling</a> , <a href="#">Regulation of Leukocyte Mediated Immunity</a> , <a href="#">Positive Regulation of Immune Effector Process</a> , <a href="#">Cancer Immune Checkpoints</a> , <a href="#">Human Leukocyte Antigen (HLA) in Adaptive Immune Response</a>

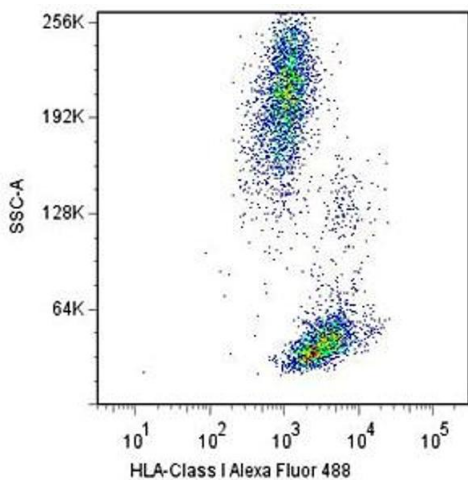
## Application Details

Application Notes:	The optimal working dilution should be determined by the end user.
Restrictions:	For Research Use only

## Handling

Format:	Liquid
Concentration:	1 mg/mL
Buffer:	In PBS, pH 7.4
Storage:	4 °C
Storage Comment:	Store at 4°C. Do not freeze.

## Images



### Flow Cytometry

**Image 1.** Surface staining of human peripheral blood cells with HLA-A monoclonal antibody, clone W6/32 Alexa Fluor® 488.