

Datasheet for ABIN5580150  
**anti-HSD17B1 antibody (N-Term)**

## 2 Images

[Go to Product page](#)

## Overview

Quantity:	100 µL
Target:	HSD17B1
Binding Specificity:	N-Term
Reactivity:	Human
Host:	Rabbit
Clonality:	Polyclonal
Conjugate:	This HSD17B1 antibody is un-conjugated
Application:	Western Blotting (WB), Immunohistochemistry (Paraffin-embedded Sections) (IHC (p))

## Product Details

Purpose:	Rabbit polyclonal antibody raised against synthetic peptide of human HSD17B1.
Immunogen:	A synthetic peptide corresponding to N-terminus of human HSD17B1.
Sequence:	MARTVVLITG CSSGIGLHLA VRLASDPSQS FKVYATLRDL KTQGRLWEAA
Cross-Reactivity:	Human

## Target Details

Target:	HSD17B1
Alternative Name:	HSD17B1 ( <a href="#">HSD17B1 Products</a> )
Background:	Full Gene Name: hydroxysteroid (17-beta) dehydrogenase 1 Synonyms: EDH17B2,EDHB17,HSD17,MGC138140,SDR28C1

## Target Details

Gene ID:	3292
NCBI Accession:	<a href="#">NM_000413</a>
Pathways:	<a href="#">Metabolism of Steroid Hormones and Vitamin D</a> , <a href="#">Steroid Hormone Biosynthesis</a>

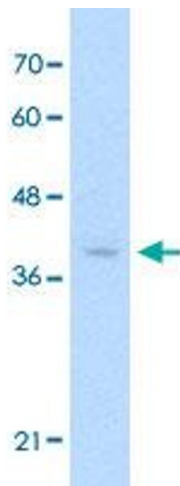
## Application Details

Application Notes:	Immunohistochemistry (Formalin/PFA-fixed paraffin-embedded sections) (4-8 µg/mL) Western Blot (0.2-1 µg/mL) The optimal working dilution should be determined by the end user.
Restrictions:	For Research Use only

## Handling

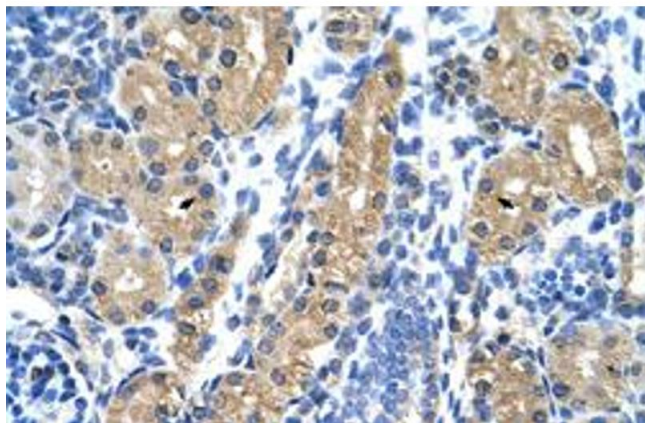
Format:	Liquid
Buffer:	In PBS (2 % sucrose, 0.09 % sodium azide).
Preservative:	Sodium azide
Precaution of Use:	This product contains Sodium azide: a POISONOUS AND HAZARDOUS SUBSTANCE which should be handled by trained staff only.
Storage:	4 °C, -20 °C
Storage Comment:	Store at 4°C. For long term storage store at -20°C. Aliquot to avoid repeated freezing and thawing.

## Images



**Western Blotting**

**Image 1.** Western Blot analysis of Jurkat cell lysate with HSD17B1 polyclonal antibody at 0.2-1 ug/mL working concentration.



#### Immunohistochemistry

**Image 2.** Immunohistochemical staining (Formalin-fixed paraffin-embedded sections) of human kidney with HSD17B1 polyclonal antibody at 4-8 ug/mL working concentration.