

Datasheet for ABIN5580164
anti-HSFX1 antibody (AA 201-230)[Go to Product page](#)

2 Images

Overview

Quantity:	400 µL
Target:	HSFX1
Binding Specificity:	AA 201-230
Reactivity:	Human
Host:	Rabbit
Clonality:	Polyclonal
Conjugate:	This HSFX1 antibody is un-conjugated
Application:	Western Blotting (WB), Immunohistochemistry (Paraffin-embedded Sections) (IHC (p))

Product Details

Purpose:	Rabbit polyclonal antibody raised against synthetic peptide of HSFX1
Immunogen:	A synthetic peptide (conjugated with KLH) corresponding to amino acids 201-230 at Central region at human HSFX1.
Cross-Reactivity:	Human

Target Details

Target:	HSFX1
Alternative Name:	HSFX1 (HSFX1 Products)
Background:	Full Gene Name: heat shock transcription factor family, X linked 1 Synonyms: LW-1

Target Details

Gene ID: 51402

Application Details

Application Notes: Immunohistochemistry (1:10-50)
Western Blot (1:1000)
The optimal working dilution should be determined by the end user.

Restrictions: For Research Use only

Handling

Format: Liquid

Buffer: In PBS (0.09 % sodium azide)

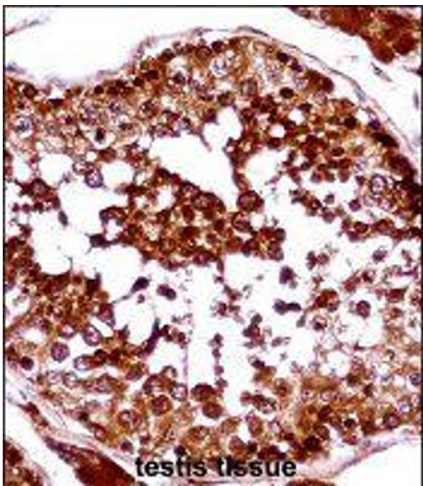
Preservative: Sodium azide

Precaution of Use: This product contains Sodium azide: a POISONOUS AND HAZARDOUS SUBSTANCE which should be handled by trained staff only.

Storage: 4 °C, -20 °C

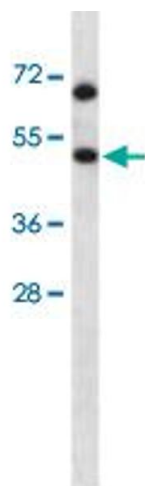
Storage Comment: Store at 4°C. For long term storage store at -20°C.
Aliquot to avoid repeated freezing and thawing.

Images



Immunohistochemistry

Image 1. Immunohistochemistry (Formalin/PFA-fixed paraffin-embedded sections) of human testis tissue with HSFX1 polyclonal antibody followed by peroxidase conjugation of the secondary antibody and DAB staining.



Western Blotting

Image 2. Western blot analysis of HSFX1 polyclonal antibody in HeLa cell line lysates (35ug/lane). HSFX1 (arrow) was detected using the purified polyclonal antibody.