

Datasheet for ABIN5580321

anti-5HT1B Receptor antibody (Internal Region)[Go to Product page](#)**1** Image

Overview

Quantity:	50 µg
Target:	5HT1B Receptor (HTR1B)
Binding Specificity:	Internal Region
Reactivity:	Human, Monkey, Chimpanzee, Gorilla
Host:	Rabbit
Clonality:	Polyclonal
Conjugate:	This 5HT1B Receptor antibody is un-conjugated
Application:	Immunohistochemistry (Paraffin-embedded Sections) (IHC (p))

Product Details

Purpose:	Rabbit polyclonal antibody raised against synthetic peptide of HTR1B.
Immunogen:	A synthetic peptide corresponding to 17 amino acids at internal region of human HTR1B.
Specificity:	BLAST analysis of the peptide immunogen showed no homology with other human proteins.
Cross-Reactivity:	Chimpanzee, Gorilla, Human, Monkey
Cross-Reactivity (Details):	BLAST analysis of the peptide immunogen showed no homology with other human proteins.

Target Details

Target:	5HT1B Receptor (HTR1B)
Alternative Name:	HTR1B (HTR1B Products)
Background:	Full Gene Name: 5-hydroxytryptamine (serotonin) receptor 1B

Target Details

	Synonyms: 5-HT1B,5-HT1DB,HTR1D2,HTR1DB,S12
Gene ID:	3351
Pathways:	JAK-STAT Signaling , cAMP Metabolic Process , Regulation of G-Protein Coupled Receptor Protein Signaling , Feeding Behaviour , S100 Proteins

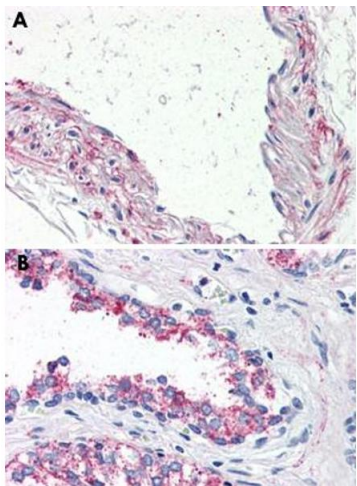
Application Details

Application Notes:	Immunohistochemistry (Formalin/PFA-fixed paraffin-embedded sections) (10 µg/mL) The optimal working dilution should be determined by the end user.
Restrictions:	For Research Use only

Handling

Format:	Liquid
Buffer:	In PBS (0.09 % sodium azide)
Preservative:	Sodium azide
Precaution of Use:	This product contains Sodium azide: a POISONOUS AND HAZARDOUS SUBSTANCE which should be handled by trained staff only.
Storage:	4 °C,-80 °C
Storage Comment:	Store at 4°C. For long term storage store at -80°C. Aliquot to avoid repeated freezing and thawing.

Images



Immunohistochemistry

Image 1. Immunohistochemical staining of formalin-fixed, paraffin-embedded human vessel (A) and human prostate (B) tissue after heat-induced antigen retrieval. Using HTR1B polyclonal antibody .