

Datasheet for ABIN5580332

anti-HTR1F antibody (3rd Cytoplasmic Domain)**1** Image[Go to Product page](#)

Overview

Quantity:	50 µg
Target:	HTR1F
Binding Specificity:	3rd Cytoplasmic Domain
Reactivity:	Human, Monkey, Chimpanzee, Orang-Utan, Gorilla
Host:	Rabbit
Clonality:	Polyclonal
Conjugate:	This HTR1F antibody is un-conjugated
Application:	Immunohistochemistry (Paraffin-embedded Sections) (IHC (p))

Product Details

Purpose:	Rabbit polyclonal antibody raised against synthetic peptide of HTR1F.
Immunogen:	A synthetic peptide corresponding to 19 amino acids at 3rd cytoplasmic domain of human HTR1F.
Specificity:	BLAST analysis of the peptide immunogen showed no homology with other human proteins, except TPRXL (47 %).
Cross-Reactivity:	Chimpanzee, Gorilla, Human, Monkey, Orang-Utan
Cross-Reactivity (Details):	BLAST analysis of the peptide immunogen showed no homology with other human proteins, except TPRXL (47 %).

Target Details

Target:	HTR1F
---------	-------

Target Details

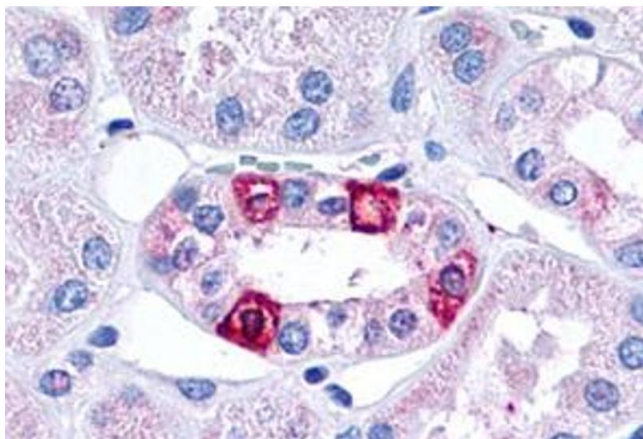
Alternative Name:	HTR1F (HTR1F Products)
Background:	Full Gene Name: 5-hydroxytryptamine (serotonin) receptor 1F Synonyms: 5-HT1F,5HT6,HTR1EL,MR77
Gene ID:	3355
Pathways:	JAK-STAT Signaling

Application Details

Application Notes:	Immunohistochemistry (Formalin/PFA-fixed paraffin-embedded sections) (6-9 µg/mL) The optimal working dilution should be determined by the end user.
Restrictions:	For Research Use only

Handling

Format:	Liquid
Buffer:	In PBS (0.09 % sodium azide)
Preservative:	Sodium azide
Precaution of Use:	This product contains Sodium azide: a POISONOUS AND HAZARDOUS SUBSTANCE which should be handled by trained staff only.
Storage:	4 °C,-80 °C
Storage Comment:	Store at 4°C. For long term storage store at -80°C. Aliquot to avoid repeated freezing and thawing.



Immunohistochemistry

Image 1. Immunohistochemical staining of formalin-fixed, paraffin-embedded human kidney, renal tubules tissue after heat-induced antigen retrieval. Using HTR1F polyclonal antibody .