

Datasheet for ABIN5580333 anti-HTR1F antibody (Extracellular Domain)

[Go to Product page](#)

1 Image

Overview

| | |
|----------------------|--|
| Quantity: | 50 µg |
| Target: | HTR1F |
| Binding Specificity: | Extracellular Domain |
| Reactivity: | Human, Rat, Monkey, Cow, Rabbit, Chimpanzee, Orang-Utan, Gorilla |
| Host: | Rabbit |
| Clonality: | Polyclonal |
| Conjugate: | This HTR1F antibody is un-conjugated |
| Application: | Immunohistochemistry (Paraffin-embedded Sections) (IHC (p)) |

Product Details

| | |
|-----------------------------|--|
| Purpose: | Rabbit polyclonal antibody raised against synthetic peptide of HTR1F. |
| Immunogen: | A synthetic peptide corresponding to 19 amino acids at N-terminal extracellular domain of human HTR1F. |
| Specificity: | BLAST analysis of the peptide immunogen showed no homology with other human proteins. |
| Cross-Reactivity: | Chimpanzee, Cow, Gorilla, Human, Monkey, Orang-Utan, Rabbit, Rat |
| Cross-Reactivity (Details): | BLAST analysis of the peptide immunogen showed no homology with other human proteins. |

Target Details

| | |
|-------------------|--|
| Target: | HTR1F |
| Alternative Name: | HTR1F (HTR1F Products) |

Target Details

Background: Full Gene Name: 5-hydroxytryptamine (serotonin) receptor 1F
Synonyms: 5-HT1F,5HT6,HTR1EL,MR77

Gene ID: 3355

Pathways: [JAK-STAT Signaling](#)

Application Details

Application Notes: Immunohistochemistry (Formalin/PFA-fixed paraffin-embedded sections) (5-8 µg/mL)
The optimal working dilution should be determined by the end user.

Restrictions: For Research Use only

Handling

Format: Liquid

Buffer: In PBS (0.09 % sodium azide)

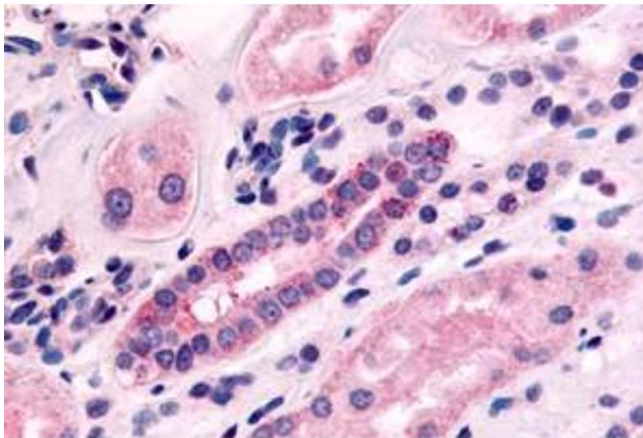
Preservative: Sodium azide

Precaution of Use: This product contains Sodium azide: a POISONOUS AND HAZARDOUS SUBSTANCE which should be handled by trained staff only.

Storage: 4 °C,-80 °C

Storage Comment: Store at 4°C. For long term storage store at -80°C.
Aliquot to avoid repeated freezing and thawing.

Images



Immunohistochemistry

Image 1. Immunohistochemical staining of formalin-fixed, paraffin-embedded human kidney, renal tubules tissue after heat-induced antigen retrieval. Using HTR1F polyclonal antibody .