

Datasheet for ABIN5580345
anti-HTR2C antibody (C-Term)[Go to Product page](#)

1 Image

Overview

Quantity:	50 µg
Target:	HTR2C
Binding Specificity:	C-Term
Reactivity:	Human, Chimpanzee
Host:	Rabbit
Clonality:	Polyclonal
Conjugate:	This HTR2C antibody is un-conjugated
Application:	Immunohistochemistry (Paraffin-embedded Sections) (IHC (p))

Product Details

Purpose:	Rabbit polyclonal antibody raised against synthetic peptide of HTR2C.
Immunogen:	A synthetic peptide corresponding to 16 amino acids at C-terminus of human HTR2C.
Specificity:	BLAST analysis of the peptide immunogen showed no homology with other human proteins.
Cross-Reactivity:	Chimpanzee, Human
Cross-Reactivity (Details):	BLAST analysis of the peptide immunogen showed no homology with other human proteins.

Target Details

Target:	HTR2C
Alternative Name:	HTR2C (HTR2C Products)
Background:	Full Gene Name: 5-hydroxytryptamine (serotonin) receptor 2C

Target Details

	Synonyms: 5-HT2C,5-HTR2C,HTR1C
Gene ID:	3358
Pathways:	Inositol Metabolic Process , Regulation of Carbohydrate Metabolic Process , Feeding Behaviour

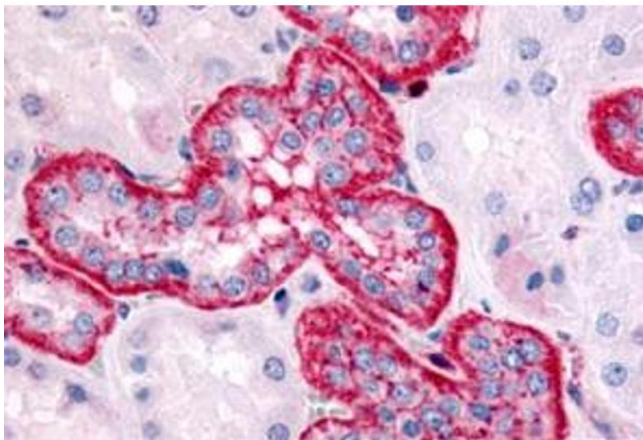
Application Details

Application Notes:	Immunohistochemistry (Formalin/PFA-fixed paraffin-embedded sections) (3.8 µg/mL) The optimal working dilution should be determined by the end user.
Restrictions:	For Research Use only

Handling

Format:	Liquid
Buffer:	In PBS (0.09 % sodium azide)
Preservative:	Sodium azide
Precaution of Use:	This product contains Sodium azide: a POISONOUS AND HAZARDOUS SUBSTANCE which should be handled by trained staff only.
Storage:	4 °C,-80 °C
Storage Comment:	Store at 4°C. For long term storage store at -80°C. Aliquot to avoid repeated freezing and thawing.

Images



Immunohistochemistry

Image 1. Immunohistochemical staining of formalin-fixed, paraffin-embedded human kidney, renal tubules tissue after heat-induced antigen retrieval. Using HTR2C polyclonal antibody .