

Datasheet for ABIN5580350
anti-HTR3E antibody (AA 345-394)[Go to Product page](#)

2 Images

Overview

Quantity:	100 µL
Target:	HTR3E
Binding Specificity:	AA 345-394
Reactivity:	Human, Mouse
Host:	Rabbit
Clonality:	Polyclonal
Conjugate:	This HTR3E antibody is un-conjugated
Application:	Western Blotting (WB), Immunofluorescence (IF)

Product Details

Purpose:	Rabbit polyclonal antibody raised against partial synthetic protein of human HTR3E.
Immunogen:	A synthetic peptide corresponding to amino acids 345-394 of human HTR3E.
Sequence:	RWLHSLLLHC NSPGRCCPTA PQKENKG PGL TPTHLP GVKE PEVSAGQMPG
Isotype:	IgG
Cross-Reactivity:	Human, Mouse

Target Details

Target:	HTR3E
Alternative Name:	HTR3E (HTR3E Products)
Background:	Full Gene Name: 5-hydroxytryptamine (serotonin) receptor 3, family member E

Target Details

Synonyms: 5-HT3c1,MGC120035,MGC120036,MGC120037

Gene ID: 285242

Application Details

Application Notes: Immunofluorescence (1:250)
Western Blot (1:1000)
The optimal working dilution should be determined by the end user.

Restrictions: For Research Use only

Handling

Format: Liquid

Buffer: In PBS, pH 7.4 (2 % sucrose, 0.09 % sodium azide).

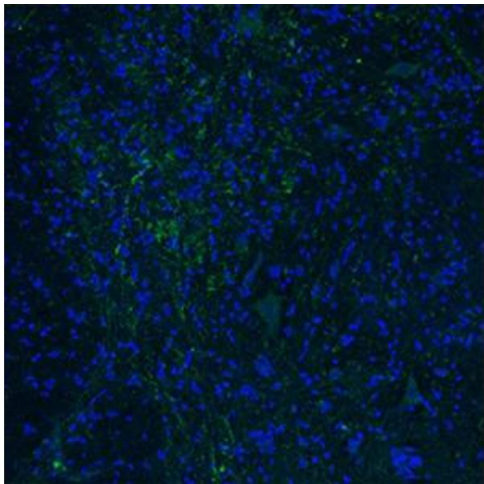
Preservative: Sodium azide

Precaution of Use: This product contains Sodium azide: a POISONOUS AND HAZARDOUS SUBSTANCE which should be handled by trained staff only.

Storage: 4 °C,-20 °C

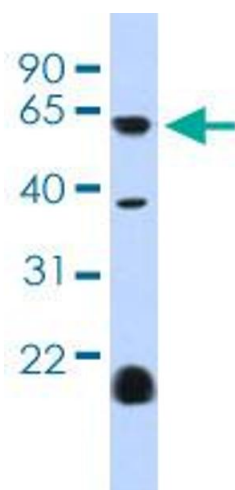
Storage Comment: Store at 4°C for up to 1 week. For long term storage store at -20°C.
Aliquot to avoid repeated freezing and thawing.

Images



Immunofluorescence

Image 1. Immunofluorescent staining of mouse spinal cord with HTR3E polyclonal antibody .



Western Blotting

Image 2. Western blot analysis of human heart tissue lysate with HTR3E polyclonal antibody .