



[Go to Product page](#)

Datasheet for ABIN5580371
anti-IGLC1 antibody

2 Images

Overview

Quantity:	100 µg
Target:	IGLC1
Reactivity:	Human
Host:	Rabbit
Clonality:	Monoclonal
Conjugate:	This IGLC1 antibody is un-conjugated
Application:	Flow Cytometry (FACS), Immunohistochemistry (Paraffin-embedded Sections) (IHC (p)), ELISA, Immunocytochemistry (ICC)

Product Details

Purpose:	Recombinant rabbit monoclonal antibody raised against human Ig lambda light chain.
Immunogen:	Original antibody is raised against human IgG.
Clone:	RM127
Isotype:	IgG
Specificity:	This antibody reacts to the lambda light chain of human immunoglobulins. No cross reactivity with the kappa light chain, mouse IgG, rat IgG, or goat IgG.
Cross-Reactivity:	Human

Target Details

Target:	IGLC1
---------	-------

Target Details

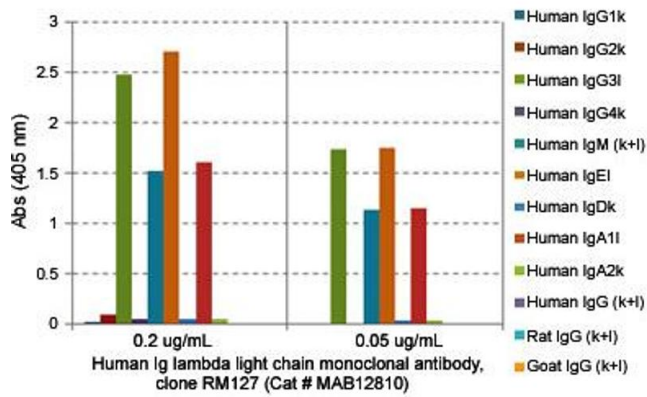
Alternative Name:	IGLC1 (IGLC1 Products)
Background:	Full Gene Name: immunoglobulin lambda constant 1 (Mcg marker) Synonyms: IGLC
Gene ID:	3537

Application Details

Application Notes:	ELISA (0.05-0.2 µg/mL) Flow Cytometry Immunocytochemistry (0.5-2 µg/mL) Immunohistochemistry (0.5-2 µg/mL) The optimal working dilution should be determined by the end user.
Restrictions:	For Research Use only

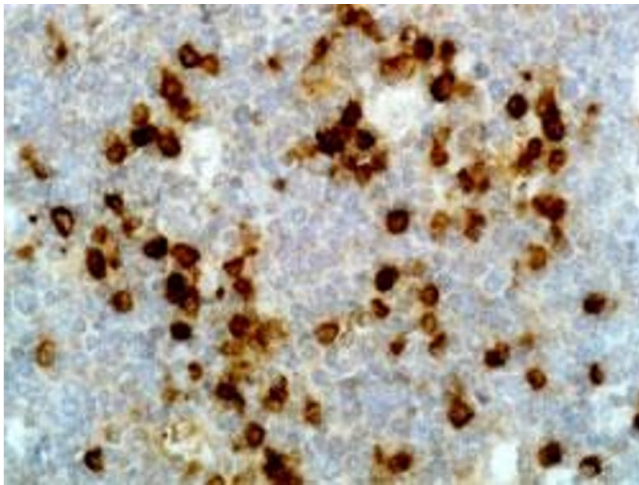
Handling

Format:	Liquid
Buffer:	In PBS (50 % glycerol, 1 % BSA, 0.09 % sodium azide)
Preservative:	Sodium azide
Precaution of Use:	This product contains Sodium azide: a POISONOUS AND HAZARDOUS SUBSTANCE which should be handled by trained staff only.
Storage:	-20 °C
Storage Comment:	Store at -20°C. Aliquot to avoid repeated freezing and thawing.



ELISA

Image 1. ELISA analysis of Human Ig lambda light chain monoclonal antibody, clone RM127 at the following concentrations: 0.2 ug/mL, 0.05 ug/mL. The plate was coated with 50 ng/well of different immunoglobulins and the result shows this antibody reacts to the lambda light chain of human immunoglobulins; no cross reactivity with the kappa light chain, mouse IgG, rat IgG, or goat IgG. An alkaline phosphatase conjugated anti-rabbit IgG as the secondary antibody.



Immunohistochemistry

Image 2. Immunohistochemical staining (Formalin-fixed paraffin-embedded sections) of human tonsil tissue with Human Ig lambda light chain monoclonal antibody, clone RM127 under 1 ug/mL working concentration.