



[Go to Product page](#)

Datasheet for ABIN5580372  
**anti-IGLC1 antibody (Biotin)**

2 Images

Overview

Quantity:	50 µg
Target:	IGLC1
Reactivity:	Human
Host:	Rabbit
Clonality:	Monoclonal
Conjugate:	This IGLC1 antibody is conjugated to Biotin
Application:	Flow Cytometry (FACS), Immunohistochemistry (Paraffin-embedded Sections) (IHC (p)), ELISA, Immunocytochemistry (ICC)

Product Details

Purpose:	Recombinant rabbit monoclonal antibody raised against human Ig lambda light chain.
Immunogen:	Original antibody is raised against mouse IgG.
Clone:	RM127
Isotype:	IgG
Cross-Reactivity:	Human

Target Details

Target:	IGLC1
Alternative Name:	IGLC1 ( <a href="#">IGLC1 Products</a> )
Background:	Full Gene Name: immunoglobulin lambda constant 1 (Mcg marker)

## Target Details

Synonyms: IGLC

Gene ID: 3537

## Application Details

Application Notes: ELISA (0.05-0.2 µg/mL)  
Flow Cytometry  
Immunocytochemistry (0.5-2 µg/mL)  
Immunohistochemistry (Formalin/PFA-fixed paraffin-embedded sections) (0.5-2 µg/mL)  
The optimal working dilution should be determined by the end user.

Restrictions: For Research Use only

## Handling

Format: Liquid

Buffer: In PBS (50 % glycerol, 1 % BSA, 0.09 % sodium azide)

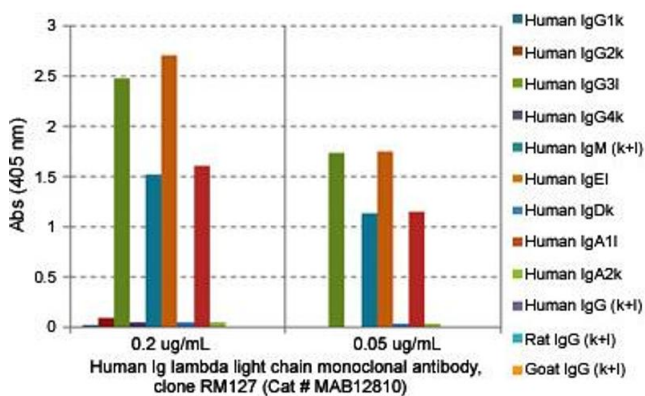
Preservative: Sodium azide

Precaution of Use: This product contains Sodium azide: a POISONOUS AND HAZARDOUS SUBSTANCE which should be handled by trained staff only.

Storage: -20 °C

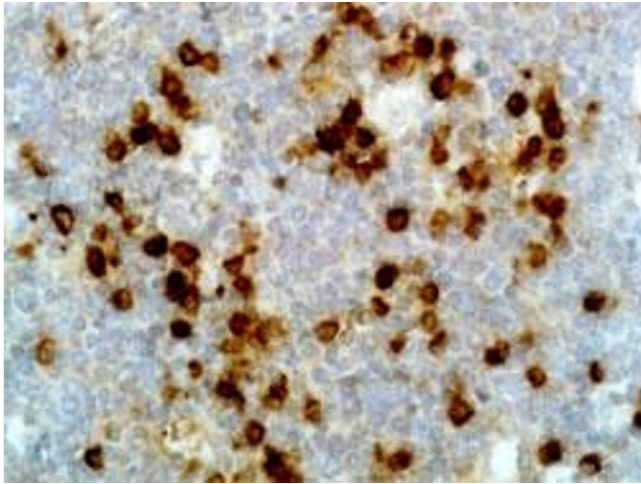
Storage Comment: Store at -20°C.  
Aliquot to avoid repeated freezing and thawing.

## Images



### ELISA

**Image 1.** ELISA analysis of Human Ig lambda light chain monoclonal antibody, clone RM127 at the following concentrations: 0.2 ug/mL, 0.05 ug/mL. The plate was coated with 50 ng/well of different immunoglobulins and the result shows this antibody reacts to the lambda light chain of human immunoglobulins; no cross reactivity with the kappa light chain, mouse IgG, rat IgG, or goat IgG. An alkaline phosphatase conjugated anti-rabbit IgG as the



secondary antibody.

### Immunohistochemistry

**Image 2.** Immunohistochemical staining (Formalin-fixed paraffin-embedded sections) of human tonsil with Human Ig lambda light chain monoclonal antibody, clone RM127 (Biotin) .