



[Go to Product page](#)

Datasheet for ABIN5580380

anti-IgD antibody

2 Images

Overview

Quantity:	100 µg
Target:	IgD
Reactivity:	Human
Host:	Rabbit
Clonality:	Monoclonal
Conjugate:	This IgD antibody is un-conjugated
Application:	Flow Cytometry (FACS), ELISA, Immunohistochemistry (Paraffin-embedded Sections) (IHC (p)), Immunocytochemistry (ICC)

Product Details

Purpose:	Recombinant rabbit monoclonal antibody raised against human IgD.
Immunogen:	Original antibody is raised against human IgD.
Clone:	RM123
Isotype:	IgG
Specificity:	This antibody reacts to human IgD. No cross reactivity with human IgG, IgM, IgE, or IgA.
Cross-Reactivity:	Human

Target Details

Target:	IgD
Alternative Name:	IGHD (IgD Products)

Target Details

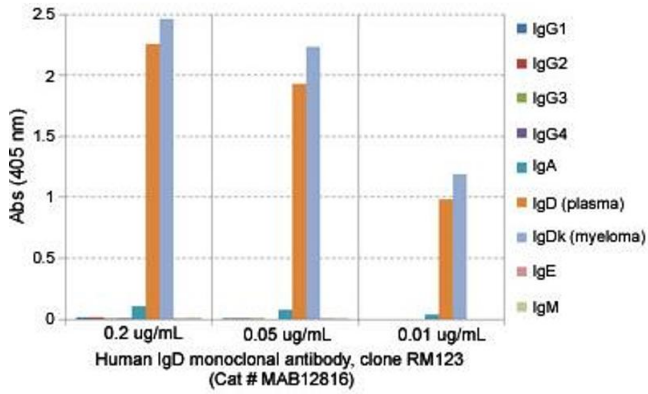
Target Type:	Antibody
Background:	Full Gene Name: immunoglobulin heavy constant delta Synonyms: FLJ00382,FLJ46727,MGC29633
Gene ID:	3495

Application Details

Application Notes:	ELISA (0.01-0.1 µg/mL for detection, 0.025-0.2 µg/well for capture) Flow Cytometry Immunocytochemistry (0.5-2 µg/mL) Immunohistochemistry (0.5-2 µg/mL) The optimal working dilution should be determined by the end user.
Restrictions:	For Research Use only

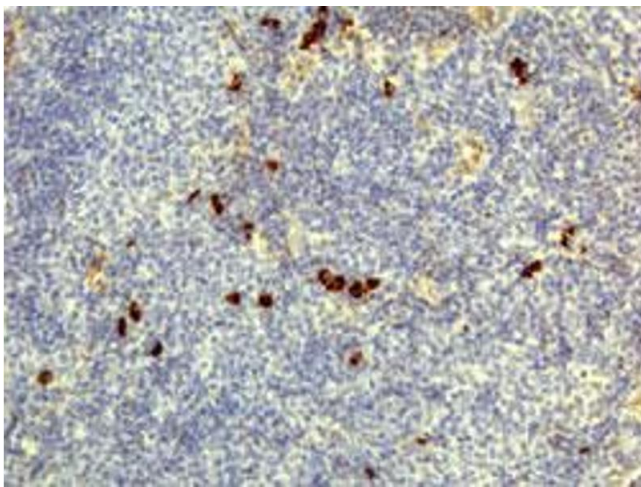
Handling

Format:	Liquid
Buffer:	In PBS (50 % glycerol, 1 % BSA, 0.09 % sodium azide)
Preservative:	Sodium azide
Precaution of Use:	This product contains Sodium azide: a POISONOUS AND HAZARDOUS SUBSTANCE which should be handled by trained staff only.
Storage:	-20 °C
Storage Comment:	Store at -20°C. Aliquot to avoid repeated freezing and thawing.



ELISA

Image 1. ELISA analysis of Human IgD monoclonal antibody, clone RM123 at the following concentrations: 0.2 ug/mL, 0.05 ug/mL, 0.01 ug/mL. The plate was coated with 50 ng/well of different immunoglobulins and the result shows this antibody reacts to human IgD kappa; no cross reactivity human IgG, IgM, IgA, or IgE. An alkaline phosphatase conjugated anti-rabbit IgG as the secondary antibody.



Immunohistochemistry

Image 2. Immunohistochemical staining (Formalin-fixed paraffin-embedded sections) of human lymphoid tissue with Human IgD monoclonal antibody, clone RM123 under 1 ug/mL working concentration.