



[Go to Product page](#)

Datasheet for ABIN5580381
anti-IgD antibody (Biotin)

2 Images

Overview

Quantity:	50 µg
Target:	IgD
Reactivity:	Human
Host:	Rabbit
Clonality:	Monoclonal
Conjugate:	This IgD antibody is conjugated to Biotin
Application:	Flow Cytometry (FACS), ELISA, Immunohistochemistry (Paraffin-embedded Sections) (IHC (p)), Immunocytochemistry (ICC)

Product Details

Purpose:	Recombinant rabbit monoclonal antibody raised against human IgD.
Immunogen:	Original antibody is raised against human IgD.
Clone:	RM123
Isotype:	IgG
Cross-Reactivity:	Human

Target Details

Target:	IgD
Alternative Name:	IGHD (IgD Products)
Target Type:	Antibody

Target Details

Background: Full Gene Name: immunoglobulin heavy constant delta
Synonyms: FLJ00382,FLJ46727,MGC29633

Gene ID: 3495

Application Details

Application Notes: ELISA (0.025-0.2 µg/well for capture, 0.01-0.1 µg/mL for detection)
Flow Cytometry
Immunocytochemistry (0.5-2 µg/mL)
Immunohistochemistry (Formalin/PFA-fixed paraffin-embedded sections) (0.5-2 µg/mL)
The optimal working dilution should be determined.

Restrictions: For Research Use only

Handling

Format: Liquid

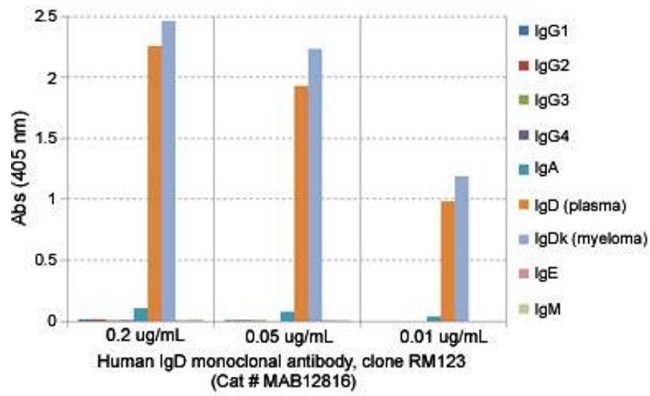
Buffer: In PBS (50 % glycerol, 1 % BSA, 0.09 % sodium azide)

Preservative: Sodium azide

Precaution of Use: This product contains Sodium azide: a POISONOUS AND HAZARDOUS SUBSTANCE which should be handled by trained staff only.

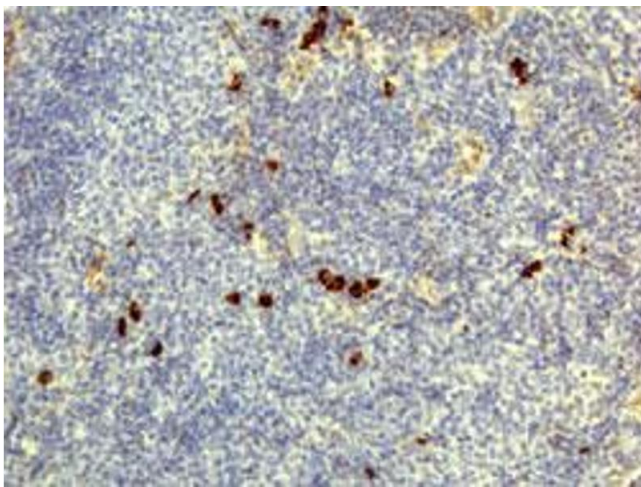
Storage: -20 °C

Storage Comment: Store at -20°C.
Aliquot to avoid repeated freezing and thawing.



ELISA

Image 1. ELISA analysis of Human IgD monoclonal antibody, clone RM123 at the following concentrations: 0.2 ug/mL, 0.05 ug/mL, 0.01 ug/mL. The plate was coated with 50 ng/well of different immunoglobulins and the result shows this antibody reacts to human IgD kappa; no cross reactivity human IgG, IgM, IgA, or IgE. An alkaline phosphatase conjugated anti-rabbit IgG as the secondary antibody.



Immunohistochemistry

Image 2. Immunohistochemical staining (Formalin-fixed paraffin-embedded sections) of human lymphoid tissue with Human IgD monoclonal antibody, clone RM123 (Biotin).