

Datasheet for ABIN5580512

anti-IER3IP1 antibody**2** Images[Go to Product page](#)

Overview

Quantity:	100 µL
Target:	IER3IP1
Reactivity:	Human
Host:	Rabbit
Clonality:	Polyclonal
Conjugate:	This IER3IP1 antibody is un-conjugated
Application:	Immunocytochemistry (ICC)

Product Details

Purpose:	Rabbit polyclonal antibody raised against recombinant IER3IP1.
Immunogen:	Recombinant protein corresponding to amino acids of human IER3IP1.
Sequence:	IAVLHEERFL KNIGWGTDQG IGGFGEEPGI KSQLMNLIRS VRT
Isotype:	IgG
Cross-Reactivity:	Human

Target Details

Target:	IER3IP1
Alternative Name:	IER3IP1 (IER3IP1 Products)
Background:	Full Gene Name: immediate early response 3 interacting protein 1 Synonyms: HSPC039,PRO2309

Target Details

Gene ID: 51124

Application Details

Application Notes: Immunohistochemistry (1:20-1:50)
Immunofluorescence (1-4 µg/mL)
The optimal working dilution should be determined by the end user.

Restrictions: For Research Use only

Handling

Format: Liquid

Buffer: In PBS, pH 7.2 (40 % glycerol, 0.02 % sodium azide)

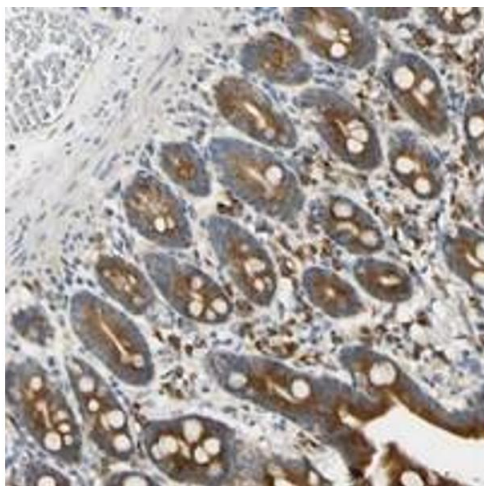
Preservative: Sodium azide

Precaution of Use: This product contains Sodium azide: a POISONOUS AND HAZARDOUS SUBSTANCE which should be handled by trained staff only.

Storage: 4 °C, -20 °C

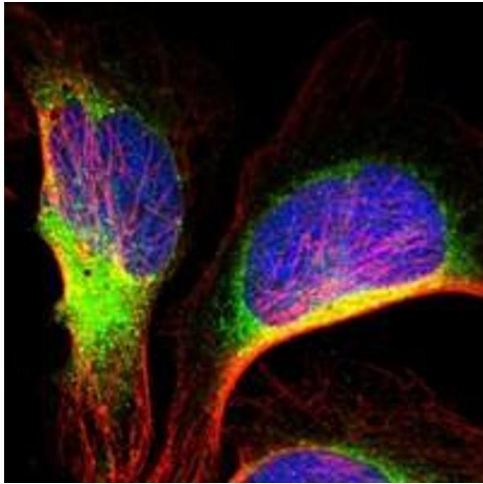
Storage Comment: Store at 4°C. For long term storage store at -20°C.
Aliquot to avoid repeated freezing and thawing.

Images



Immunohistochemistry

Image 1. Immunohistochemical staining of human duodenum with IER3IP1 polyclonal antibody shows strong cytoplasmic positivity in glandular cells at 1:20-1:50 dilution.



Immunofluorescence

Image 2. Immunofluorescent staining of human cell line U-2 OS with IER3IP1 polyclonal antibody at 1-4 ug/mL dilution shows positivity in endoplasmic reticulum.