

Datasheet for ABIN5580517  
**anti-IFI44L antibody (N-Term)**[Go to Product page](#)

## 2 Images

## Overview

Quantity:	100 µL
Target:	IFI44L
Binding Specificity:	N-Term
Reactivity:	Human
Host:	Rabbit
Clonality:	Polyclonal
Conjugate:	This IFI44L antibody is un-conjugated
Application:	Western Blotting (WB), Immunohistochemistry (Paraffin-embedded Sections) (IHC (p))

## Product Details

Purpose:	Rabbit polyclonal antibody raised against synthetic peptide of human IFI44L.
Immunogen:	A synthetic peptide corresponding to N-terminus of human IFI44L.
Sequence:	MEVTTRLTWN DENHLRKLLG NVLSLLYKS SVHGGSIEDM VERCSRQGCT
Cross-Reactivity:	Human

## Target Details

Target:	IFI44L
Alternative Name:	IFI44L ( <a href="#">IFI44L Products</a> )
Background:	Full Gene Name: interferon-induced protein 44-like Synonyms: C1orf29,GS3686

## Target Details

Gene ID:	10964
NCBI Accession:	<a href="#">NM_006820</a>

## Application Details

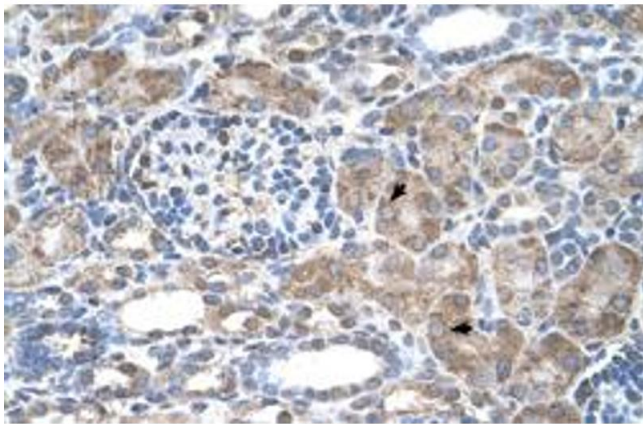
Application Notes:	Immunohistochemistry (Formalin/PFA-fixed paraffin-embedded sections) (4-8 µg/mL) Western Blot (5 µg/mL) The optimal working dilution should be determined by the end user.
--------------------	--

Restrictions:	For Research Use only
---------------	-----------------------

## Handling

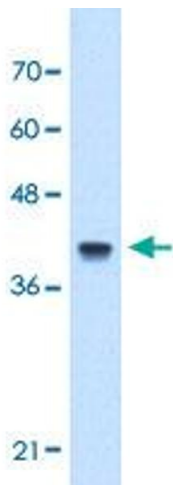
Format:	Liquid
Buffer:	In PBS (2 % sucrose, 0.09 % sodium azide).
Preservative:	Sodium azide
Precaution of Use:	This product contains Sodium azide: a POISONOUS AND HAZARDOUS SUBSTANCE which should be handled by trained staff only.
Storage:	4 °C,-20 °C
Storage Comment:	Store at 4°C. For long term storage store at -20°C. Aliquot to avoid repeated freezing and thawing.

## Images



### Immunohistochemistry

**Image 1.** Immunohistochemical staining (Formalin-fixed paraffin-embedded sections) of human kidney with IFI44L polyclonal antibody at 4-8 ug/mL working concentration.



Western Blotting

**Image 2.** Western Blot analysis of Jurkat cell lysate with IFI44L polyclonal antibody at 5 ug/mL working concentration.