

Datasheet for ABIN5580663  
**anti-IGSF8 antibody (Internal Region)**[Go to Product page](#)

## 1 Image

## Overview

Quantity:	50 µg
Target:	IGSF8
Binding Specificity:	Internal Region
Reactivity:	Human, Cow, Pig, Rabbit, Monkey, Gorilla
Host:	Rabbit
Clonality:	Polyclonal
Conjugate:	This IGSF8 antibody is un-conjugated
Application:	Immunohistochemistry (Paraffin-embedded Sections) (IHC (p))

## Product Details

Purpose:	Rabbit polyclonal antibody raised against synthetic peptide of IGSF8.
Immunogen:	A synthetic peptide corresponding to 15 amino acids at internal region of human IGSF8.
Specificity:	BLAST analysis of the peptide immunogen showed no homology with other human proteins, except SIAH2 (53 %).
Cross-Reactivity:	Cow, Gorilla, Human, Monkey, Pig, Rabbit
Cross-Reactivity (Details):	BLAST analysis of the peptide immunogen showed no homology with other human proteins, except SIAH2 (53 %).

## Target Details

Target:	IGSF8
---------	-------

## Target Details

Alternative Name:	IGSF8 ( <a href="#">IGSF8 Products</a> )
Background:	Full Gene Name: immunoglobulin superfamily, member 8 Synonyms: CD316,CD81P3,EWI2,PGRL
Gene ID:	93185

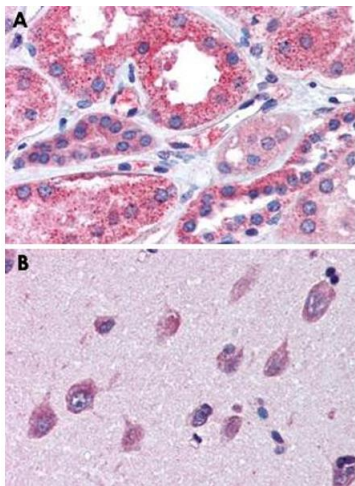
## Application Details

Application Notes:	Immunohistochemistry (Formalin/PFA-fixed paraffin-embedded sections) (15 µg/mL) The optimal working dilution should be determined by the end user.
Restrictions:	For Research Use only

## Handling

Format:	Liquid
Buffer:	In PBS (0.09 % sodium azide)
Preservative:	Sodium azide
Precaution of Use:	This product contains Sodium azide: a POISONOUS AND HAZARDOUS SUBSTANCE which should be handled by trained staff only.
Storage:	4 °C,-80 °C
Storage Comment:	Store at 4°C. For long term storage store at -80°C. Aliquot to avoid repeated freezing and thawing.

## Images



### Immunohistochemistry

**Image 1.** Immunohistochemical staining of formalin-fixed, paraffin-embedded human kidney (A) and human brain, cortex (B) tissue after heat-induced antigen retrieval. Using IGSF8 polyclonal antibody .