

Datasheet for ABIN5580751

**anti-Interleukin 17a antibody (AA 1-75)****3** Images[Go to Product page](#)

## Overview

|                      |   |
|----------------------|---|
| Quantity:            | 50 µg   |
| Target:              | Interleukin 17a (IL17A)   |
| Binding Specificity: | AA 1-75   |
| Reactivity:          | Human   |
| Host:                | Mouse   |
| Clonality:           | Monoclonal  |
| Conjugate:           | This Interleukin 17a antibody is un-conjugated  |
| Application:         | Western Blotting (WB), Flow Cytometry (FACS), Immunohistochemistry (Paraffin-embedded Sections) (IHC (p)) |

## Product Details

|                   |   |
|-------------------|---|
| Purpose:          | Mouse monoclonal antibody raised against human IL17A.       |
| Immunogen:        | A peptide corresponding to amino acids 1-75 of human IL17A. |
| Clone:            | 4K5F6   |
| Isotype:          | IgG2b   |
| Cross-Reactivity: | Human   |

## Target Details

|                   |  |
|-------------------|--|
| Target:           | Interleukin 17a (IL17A)                  |
| Alternative Name: | IL17A ( <a href="#">IL17A Products</a> ) |

Target Details

|             |                                   |
|-------------|-----------------------------------|
| Background: | Full Gene Name: interleukin 17A   |
|             | Synonyms: CTLA8,IL-17,IL-17A,IL17 |
| Gene ID:    | 3605                              |

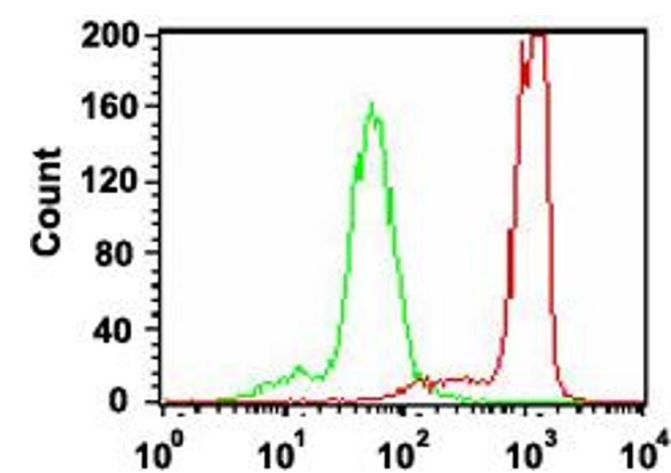
Application Details

|                    |   |
|--------------------|---|
| Application Notes: | Flow Cytometry  |
|                    | Immunohistochemistry (Formalin/PFA-fixed paraffin-embedded sections) (5-10 µg/mL) |
|                    | Western Blot (0.2-2 µg/mL)  |
|                    | The optimal working dilution should be determined by the end user.                |
| Restrictions:      | For Research Use only   |

Handling

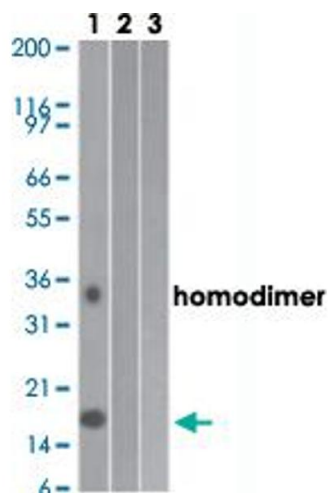
|                    |  |
|--------------------|--|
| Format:            | Liquid   |
| Buffer:            | In PBS (0.05 % BSA, 0.05 % sodium azide).  |
| Preservative:      | Sodium azide   |
| Precaution of Use: | This product contains Sodium azide: a POISONOUS AND HAZARDOUS SUBSTANCE which should be handled by trained staff only. |
| Storage:           | 4 °C,-20 °C  |
| Storage Comment:   | Store at 4°C. For long term storage store at -20°C.  |
|                    | Aliquot to avoid repeated freezing and thawing.  |

Images



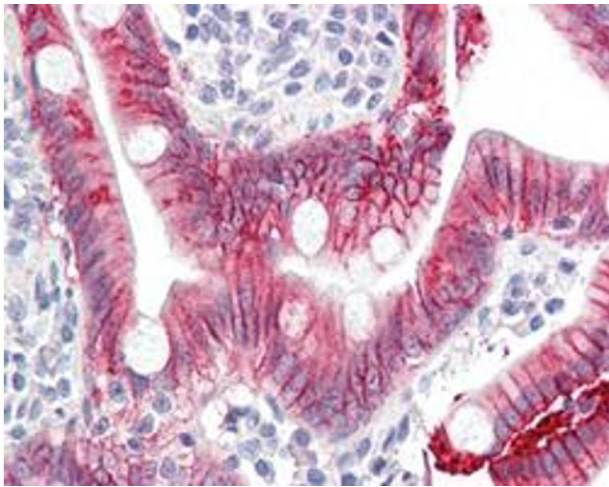
Flow Cytometry

**Image 1.** Flow cytometric analysis of human lymphocytes with IL17A monoclonal antibody, clone 4K5F6 (red histogram) and an isotype control (green histogram) followed by FITC-conjugated goat anti-mouse IgG as the secondary antibody.



### Western Blotting

**Image 2.** Western blot analysis of Lane 1: human, Lane 2: mouse and Lane 3: rat full-length IL17A recombinant protein with IL17A monoclonal antibody, clone 4K5F6 at 0.2 ug/mL working concentration.



### Immunohistochemistry

**Image 3.** Immunohistochemical staining (Formalin-fixed paraffin-embedded sections) of human small intestine with IL17A monoclonal antibody, clone 4K5F6 at 5-10 ug/mL working concentration.