



[Go to Product page](#)

Datasheet for ABIN5580936
anti-INCA1 antibody (C-Term)

1 Image

Overview

| | |
|----------------------|--------------------------------------|
| Quantity: | 100 µg |
| Target: | INCA1 |
| Binding Specificity: | C-Term |
| Reactivity: | Human, Mouse, Rat |
| Host: | Rabbit |
| Clonality: | Polyclonal |
| Conjugate: | This INCA1 antibody is un-conjugated |
| Application: | ELISA, Western Blotting (WB) |

Product Details

| | |
|-------------------|---|
| Purpose: | Rabbit polyclonal antibody raised against synthetic peptide of INCA1. |
| Immunogen: | A synthetic peptide corresponding to 15 amino acids near C-terminus of human INCA1. |
| Cross-Reactivity: | Human, Mouse, Rat |

Target Details

| | |
|-------------------|--|
| Target: | INCA1 |
| Alternative Name: | INCA1 (INCA1 Products) |
| Background: | Full Gene Name: inhibitor of CDK interacting with cyclin A1 Synonyms: HSD45,MGC148150,MGC148151 |
| Gene ID: | 388324 |

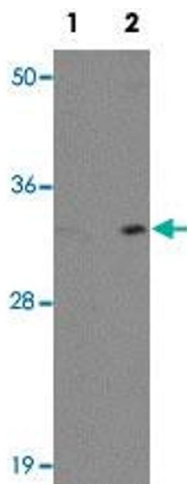
Application Details

| | |
|--------------------|--|
| Application Notes: | Western blot (1-2 µg/mL) The optimal working dilution should be determined by the end user. |
| Restrictions: | For Research Use only |

Handling

| | |
|--------------------|---|
| Format: | Liquid |
| Concentration: | 1 mg/mL |
| Buffer: | In PBS (0.02 % sodium azide) |
| Preservative: | Sodium azide |
| Precaution of Use: | This product contains Sodium azide: a POISONOUS AND HAZARDOUS SUBSTANCE which should be handled by trained staff only. |
| Storage: | 4 °C, -20 °C |
| Storage Comment: | Store at 4°C for three months. For long term storage store at -20°C. Aliquot to avoid repeated freezing and thawing. |

Images



Western Blotting

Image 1. Western blot analysis of EL4 cells with INCA1 polyclonal antibody at (Lane 1) 1 and (Lane 2) 2 µg/mL dilution.