

Datasheet for ABIN5581163  
**anti-ITGA6 antibody (Internal Region)**

## 2 Images

[Go to Product page](#)

## Overview

Quantity:	50 µg
Target:	ITGA6
Binding Specificity:	Internal Region
Reactivity:	Human, Mouse, Rat, Cow, Dog, Horse, Monkey, Hamster, Guinea Pig, Gorilla, Chimpanzee, Orang-Utan
Host:	Rabbit
Clonality:	Polyclonal
Conjugate:	This ITGA6 antibody is un-conjugated
Application:	Immunohistochemistry (Paraffin-embedded Sections) (IHC (p))

## Product Details

Purpose:	Rabbit polyclonal antibody raised against synthetic peptide of ITGA6.
Immunogen:	A synthetic peptide corresponding to 16 amino acid at internal region of human ITGA6.
Specificity:	BLAST analysis of the peptide immunogen showed no homology with other human proteins.
Cross-Reactivity:	Chimpanzee, Cow, Dog, Gorilla, Guinea Pig, Hamster, Horse, Human, Monkey, Mouse, Orang-Utan, Rat
Cross-Reactivity (Details):	BLAST analysis of the peptide immunogen showed no homology with other human proteins.

## Target Details

Target:	ITGA6
---------	-------

## Target Details

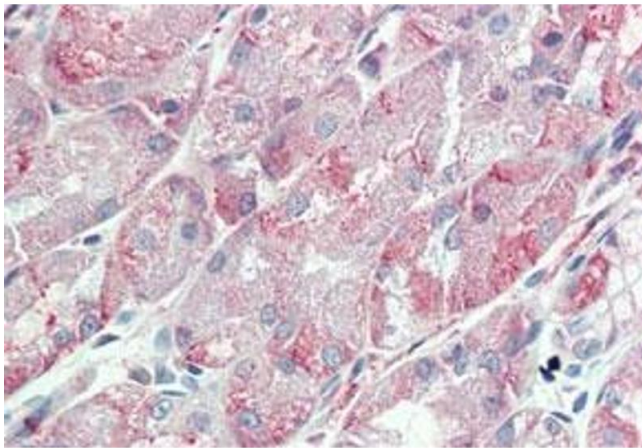
Alternative Name:	ITGA6 ( <a href="#">ITGA6 Products</a> )
Background:	Full Gene Name: integrin, alpha 6 Synonyms: CD49f,DKFZp686J01244,FLJ18737,ITGA6B,VLA-6
Gene ID:	3655
Pathways:	<a href="#">CXCR4-mediated Signaling Events</a> , <a href="#">Brown Fat Cell Differentiation</a> , <a href="#">Integrin Complex</a>

## Application Details

Application Notes:	Immunohistochemistry (Formalin/PFA-fixed paraffin-embedded sections) (5 µg/mL) The optimal working dilution should be determined by the end user.
Restrictions:	For Research Use only

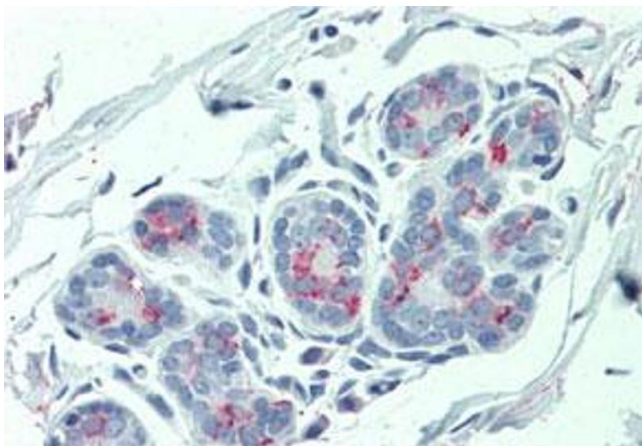
## Handling

Format:	Liquid
Buffer:	In PBS (0.09 % sodium azide)
Preservative:	Sodium azide
Precaution of Use:	This product contains Sodium azide: a POISONOUS AND HAZARDOUS SUBSTANCE which should be handled by trained staff only.
Storage:	4 °C,-80 °C
Storage Comment:	Store at 4°C. For long term storage store at -80°C. Aliquot to avoid repeated freezing and thawing.



#### Immunohistochemistry

**Image 1.** Immunohistochemistry (Formalin/PFA-fixed paraffin-embedded sections) of human stomach tissue with ITGA6 polyclonal antibody . Immunohistochemistry of formalin-fixed, paraffin-embedded tissue after heat-induced antigen retrieval.



#### Immunohistochemistry

**Image 2.** Immunohistochemistry (Formalin/PFA-fixed paraffin-embedded sections) of human breast tissue with ITGA6 polyclonal antibody . Immunohistochemistry of formalin-fixed, paraffin-embedded tissue after heat-induced antigen retrieval.