

Datasheet for ABIN5581377
anti-Junctophilin 1 antibody (AA 387-512)[Go to Product page](#)

3 Images

Overview

Quantity:	100 µL
Target:	Junctophilin 1 (JPH1)
Binding Specificity:	AA 387-512
Reactivity:	Human
Host:	Rabbit
Clonality:	Polyclonal
Conjugate:	This Junctophilin 1 antibody is un-conjugated
Application:	Western Blotting (WB), Immunohistochemistry (Paraffin-embedded Sections) (IHC (p)), Immunofluorescence (IF)

Product Details

Purpose:	Rabbit polyclonal antibody raised against partial recombinant human JPH1.
Immunogen:	Recombinant protein corresponding to amino acids 387-512 of human JPH1.
Sequence:	KADAADQAAL AARQECDIAR AVARELSPDF YQPGPDYVKQ RFQEGVDAKE NPEEKVPEKP PTPKESPHFY RKGTTPPRSP EASPKHSHSP ASSPKPLKKQ NPSSGARLNQ DKRSVADEQV TAIVNK
Isotype:	IgG
Cross-Reactivity:	Human

Target Details

Target:	Junctophilin 1 (JPH1)
---------	-----------------------

Target Details

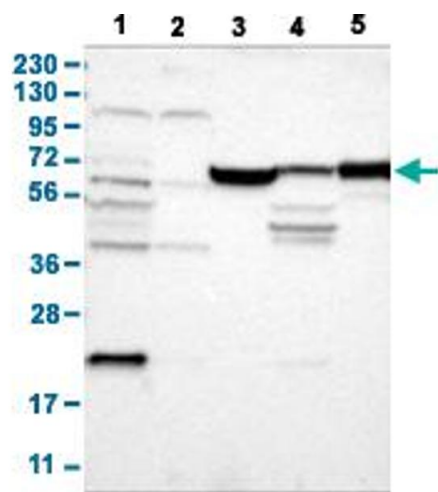
Alternative Name:	JPH1 (JPH1 Products)
Background:	Full Gene Name: junctophilin 1 Synonyms: DKFZp762L0313,JP-1,JP1
Gene ID:	56704

Application Details

Application Notes:	Immunofluorescence (1 - 4 µg/mL) Immunohistochemistry (Formalin/PFA-fixed paraffin-embedded sections) (1:200 - 1:500) Western Blot (1:100 - 1:250) The optimal working dilution should be determined by the end user.
Restrictions:	For Research Use only

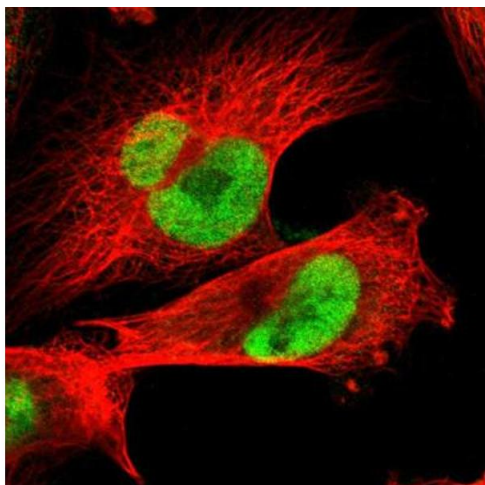
Handling

Format:	Liquid
Buffer:	In PBS, pH 7.2 (40 % glycerol, 0.02 % sodium azide).
Preservative:	Sodium azide
Precaution of Use:	This product contains Sodium azide: a POISONOUS AND HAZARDOUS SUBSTANCE which should be handled by trained staff only.
Storage:	4 °C,-20 °C
Storage Comment:	Store at 4°C for short term storage. For long term storage store at -20°C. Aliquot to avoid repeated freezing and thawing.



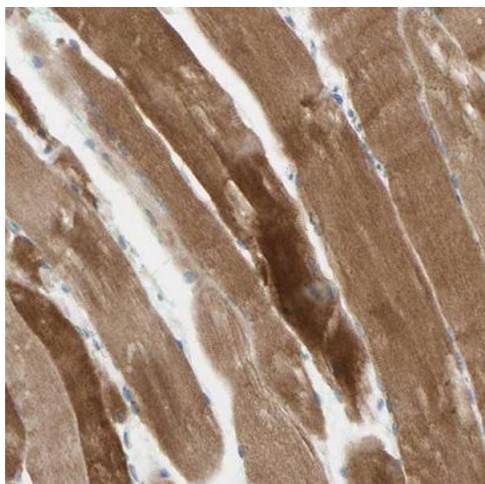
Western Blotting

Image 1. Western Blot analysis with JPH1 polyclonal antibody . Lane 1: Human cell line RT-4 Lane 2: Human cell line U-251MG sp Lane 3: Human plasma (IgG/HSA depleted) Lane 4: Human liver tissue Lane 5: Human tonsil tissue



Immunofluorescence

Image 2. Immunofluorescent staining of human cell line U-251 MG with JPH1 polyclonal antibody shows positivity in nucleus but excluded from the nucleoli. Antibody staining is shown in green.



Immunohistochemistry

Image 3. Immunohistochemical staining (Formalin-fixed paraffin-embedded sections) of human skeletal muscle with JPH1 polyclonal antibody shows strong cytoplasmic positivity in myocytes.