



[Go to Product page](#)

Datasheet for ABIN5581459

## anti-KBTBD8 antibody

### 2 Images

#### Overview

Quantity:	100 µL
Target:	KBTBD8
Reactivity:	Human
Host:	Rabbit
Clonality:	Polyclonal
Conjugate:	This KBTBD8 antibody is un-conjugated
Application:	Western Blotting (WB), Immunohistochemistry (Paraffin-embedded Sections) (IHC (p))

#### Product Details

Purpose:	Rabbit polyclonal antibody raised against recombinant KBTBD8.
Immunogen:	Recombinant protein corresponding to amino acids of human KBTBD8.
Sequence:	IRWFEHEQNE REVHLPEIFA KCIRFPLMED TFIEKIPPQF AQAIKSCVE KGPSNTNGCT QRLGMTASEM IICFDDAAHKH SGKKQTV
Isotype:	IgG
Cross-Reactivity:	Human, Mouse, Rat

#### Target Details

Target:	KBTBD8
Alternative Name:	KBTBD8 ( <a href="#">KBTBD8 Products</a> )
Background:	Full Gene Name: kelch repeat and BTB (POZ) domain containing 8

## Target Details

Synonyms: KIAA1842,TA-KRP

Gene ID: 84541

## Application Details

Application Notes: Immunohistochemistry (1:50-1:200)  
Western Blot (1:250-1:500)  
The optimal working dilution should be determined by the end user.

Restrictions: For Research Use only

## Handling

Format: Liquid

Buffer: In PBS, pH 7.2 (40 % glycerol, 0.02 % sodium azide)

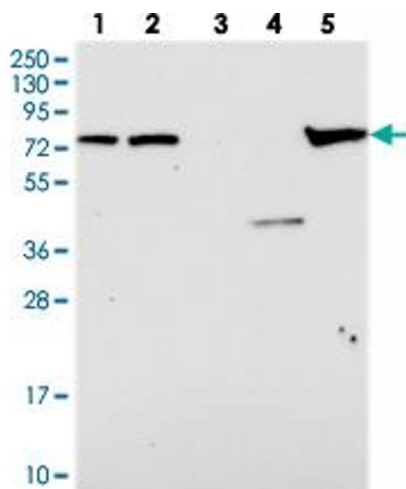
Preservative: Sodium azide

Precaution of Use: This product contains Sodium azide: a POISONOUS AND HAZARDOUS SUBSTANCE which should be handled by trained staff only.

Storage: 4 °C,-20 °C

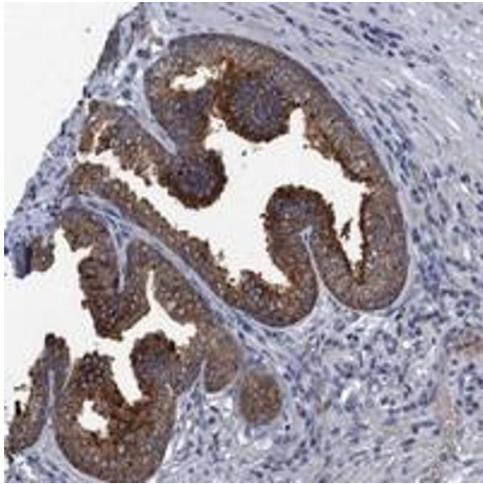
Storage Comment: Store at 4°C. For long term storage store at -20°C.  
Aliquot to avoid repeated freezing and thawing.

## Images



### Western Blotting

**Image 1.** Western blot analysis of Lane 1: RT-4, Lane 2: U-251 MG, Lane 3: Human Plasma, Lane 4: Liver, Lane 5: Tonsil with KBTBD8 polyclonal antibody .



### Immunohistochemistry

**Image 2.** Immunohistochemical staining of human prostate with KBTBD8 polyclonal antibody shows strong cytoplasmic positivity in glandular cells.