

Datasheet for ABIN5581587
anti-KCNC1 antibody (AA 479-508)[Go to Product page](#)

2 Images

Overview

Quantity:	400 µL
Target:	KCNC1
Binding Specificity:	AA 479-508
Reactivity:	Human
Host:	Rabbit
Clonality:	Polyclonal
Conjugate:	This KCNC1 antibody is un-conjugated
Application:	Western Blotting (WB), Immunohistochemistry (Paraffin-embedded Sections) (IHC (p))

Product Details

Purpose:	Rabbit polyclonal antibody raised against synthetic peptide of KCNC1
Immunogen:	A synthetic peptide (conjugated with KLH) corresponding to amino acids 479-508 at C-terminal region at human KCNC1.
Cross-Reactivity:	Human

Target Details

Target:	KCNC1
Alternative Name:	KCNC1 (KCNC1 Products)
Background:	Full Gene Name: potassium voltage-gated channel, Shaw-related subfamily, member 1 Synonyms: FLJ41162,FLJ42249,FLJ43491,KV3.1,KV4,MGC129855,NGK2

Target Details

Gene ID: 3746

Application Details

Application Notes: Immunohistochemistry (1:10-50)
Western Blot (1:1000)
The optimal working dilution should be determined by the end user.

Restrictions: For Research Use only

Handling

Format: Liquid

Buffer: In PBS (0.09 % sodium azide)

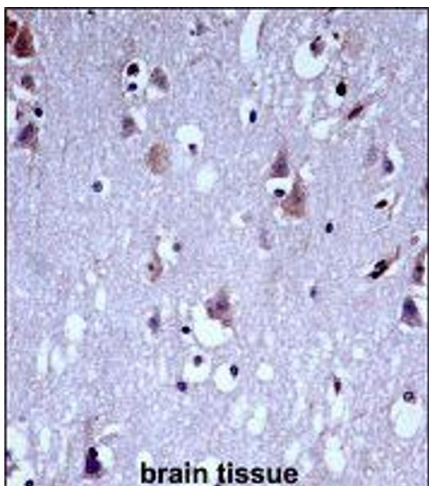
Preservative: Sodium azide

Precaution of Use: This product contains Sodium azide: a POISONOUS AND HAZARDOUS SUBSTANCE which should be handled by trained staff only.

Storage: 4 °C, -20 °C

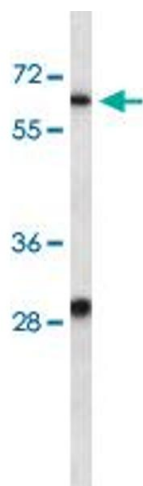
Storage Comment: Store at 4°C. For long term storage store at -20°C.
Aliquot to avoid repeated freezing and thawing.

Images



Immunohistochemistry

Image 1. Immunohistochemistry (Formalin/PFA-fixed paraffin-embedded sections) of human brain tissue with KCNC1 polyclonal antibody followed by peroxidase conjugation of the secondary antibody and DAB staining.



Western Blotting

Image 2. Western blot analysis of KCNC1 polyclonal antibody in HepG2 cell line lysates (35ug/lane). KCNC1 (arrow) was detected using the purified polyclonal antibody.