

Datasheet for ABIN5581600

anti-KCND3 antibody[Go to Product page](#)**1** Image

Overview

| | |
|--------------|---|
| Quantity: | 100 µg |
| Target: | KCND3 |
| Reactivity: | Mouse |
| Host: | Rabbit |
| Clonality: | Polyclonal |
| Conjugate: | This KCND3 antibody is un-conjugated |
| Application: | Western Blotting (WB), Enzyme Immunoassay (EIA) |

Product Details

| | |
|-------------------|---|
| Purpose: | Rabbit polyclonal antibody raised against synthetic peptide of Kcnd3. |
| Immunogen: | A synthetic peptide (conjugated with KLH) corresponding to mouse Kcnd3. |
| Sequence: | RTTLERYPDT |
| Cross-Reactivity: | Mouse |

Target Details

| | |
|-------------------|--|
| Target: | KCND3 |
| Alternative Name: | Kcnd3 (KCND3 Products) |
| Background: | Full Gene Name: potassium voltage-gated channel, Shal-related family, member 3 Synonyms: AW045978,Kncd3,Kv4.3 |
| Gene ID: | 56543 |

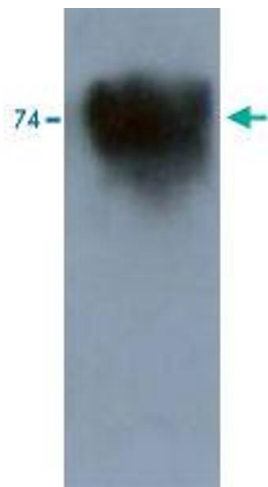
Application Details

| | |
|--------------------|--|
| Application Notes: | Enzyme Immunoassay (1:500000) Western Blot (1:5000) The optimal working dilution should be determined by the end user. |
| Restrictions: | For Research Use only |

Handling

| | |
|------------------|---|
| Format: | Lyophilized |
| Buffer: | Lyophilized from 10 mM PBS |
| Storage: | -20 °C |
| Storage Comment: | Store at -20°C on dry atmosphere. After reconstitution with deionized water, store at -20°C or lower. Aliquot to avoid repeated freezing and thawing. |

Images



Western Blotting

Image 1. Western blot analysis in mouse brain tissue extract using Kcnd3 polyclonal antibody .