

Datasheet for ABIN5581612
anti-KCNH6 antibody (N-Term)[Go to Product page](#)

2 Images

Overview

Quantity:	100 µL
Target:	KCNH6
Binding Specificity:	N-Term
Reactivity:	Human
Host:	Rabbit
Clonality:	Polyclonal
Conjugate:	This KCNH6 antibody is un-conjugated
Application:	Western Blotting (WB), Immunohistochemistry (Paraffin-embedded Sections) (IHC (p))

Product Details

Purpose:	Rabbit polyclonal antibody raised against synthetic peptide of human KCNH6.
Immunogen:	A synthetic peptide corresponding to N-terminus of human KCNH6.
Sequence:	GKYRTISQIP QFTLNFVEFN LEKHRSSSTT EIEIAPHKV VERTQNVTEK
Cross-Reactivity:	Human

Target Details

Target:	KCNH6
Alternative Name:	KCNH6 (KCNH6 Products)
Background:	Full Gene Name: potassium voltage-gated channel, subfamily H (eag-related), member 6 Synonyms: ERG2,HERG2,Kv11.2

Target Details

Gene ID:	81033
NCBI Accession:	NM_030779

Application Details

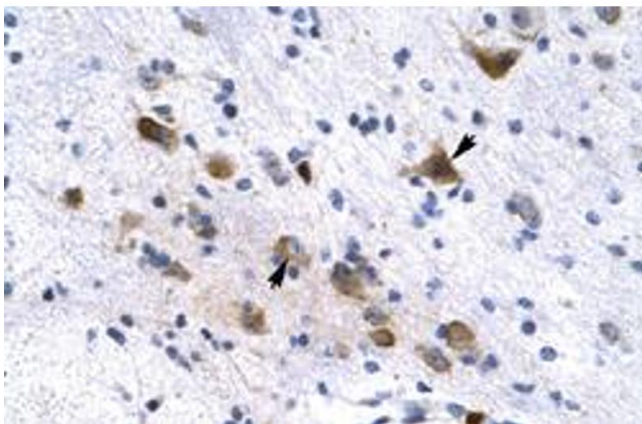
Application Notes:	Immunohistochemistry (Formalin/PFA-fixed paraffin-embedded sections) (4-8 µg/mL) Western Blot (1.25 µg/mL) The optimal working dilution should be determined by the end user.
--------------------	---

Restrictions:	For Research Use only
---------------	-----------------------

Handling

Format:	Liquid
Buffer:	In PBS (2 % sucrose, 0.09 % sodium azide).
Preservative:	Sodium azide
Precaution of Use:	This product contains Sodium azide: a POISONOUS AND HAZARDOUS SUBSTANCE which should be handled by trained staff only.
Storage:	4 °C,-20 °C
Storage Comment:	Store at 4°C. For long term storage store at -20°C. Aliquot to avoid repeated freezing and thawing.

Images



Immunohistochemistry

Image 1. Immunohistochemical staining (Formalin-fixed paraffin-embedded sections) of human brain with KCNH6 polyclonal antibody at 4-8 µg/mL working concentration.



Western Blotting

Image 2. Western Blot analysis of Jurkat cell lysate with KCNH6 polyclonal antibody at 1.25 ug/mL working concentration.